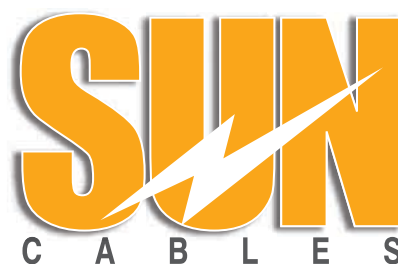
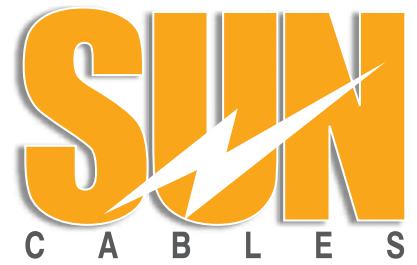


www.suncables.com

UNARMoured CABLES

PRODUCT CATALOGUE





www.suncables.com

About Sun Cables

Established in the year 2004 **Sun Cables, a Nangalwala Impex (P) Ltd.** initiation, is reckoned as a leader in LV Specialty Cables with a decade old legacy for excellence, innovation and customization. Since, its inception the company grew leaps and bounds with its diverse range products catering a huge clientele. Our product portfolio includes Power Cable Assemblies, Wiring Harness, Welding Cables, Battery Leads, Railway Cables, Auto Cables, Wind Turbine Cables, Ignition Cables, Auto Utility Kits and more.

With the state-of-the-art R&D department, their clients now avail of customized solutions resulting in cost-efficiency. Our R&D department with their team of expert professionals is continuously developing and improvising products to offer best of the cabling solutions to the clients. In our technically suffice production facility each product is manufactured with great precision ensuring safety of the end users. The machinery employed is

being modernized for fast and efficient output. Our products are ISI marked meeting the highest standards of quality cables such as IS, BS, IEC, VDE and HD. Each product undergoes a stringent quality control tests. Moreover, our R&D Department is approved by Department of Science & Industrial Research (DSIR) which authenticates our products. Our team of experts specializes in import substitutions with an exceptional technical knowledge and promises customized end-to-end cabling solutions to the Welding Industry.

The company has a remarkable presence in the domestic market and has also spread its wing in overseas market catering the MNCs and other sectors like defense, railways, mining, steel plants etc. With a holistic approach towards the cable solutions industry, Sun Cables aims at **Evolving Together**, ensuring customer satisfaction.



UNARMoured CABLES

Economic Al /XLPE /PVC



RIGID CABLES

Rigid UnArmoured - Economic Al /XLPE /PVC

Category: Rigid Cables

Sub Category: UnArmoured Cables 1.1 KV

Main Characteristics: Economical

Name: 1.1 KV Rigid Un Armoured Al / XLPE / PVC Cables
Part No. A2XY

Approval: IEC 60502-Pt-1, BS: 6724

Construction:

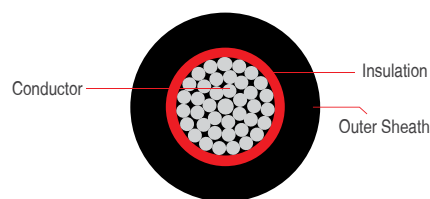
- **Class:** 2 Stranded Aluminium Wire as per BS 6360 / IEC 60228
- **Insulation:** XLPE as per IEC 60502
- **Core Identification:**
 - 1 Core: **Black / Red / White**
 - 2 Core: **Red, Black**
 - 3 Core: **Red, Yellow, Blue**
 - 4 Core: **Red, Yellow, Blue & Black**
- **Inner Sheath:** PVC ST2 Grade as per IEC 60502/ IEC 60502
- **Outer Sheath:** PVC ST2 Grade as per IEC 60502/ IEC 60502

Product Feature:

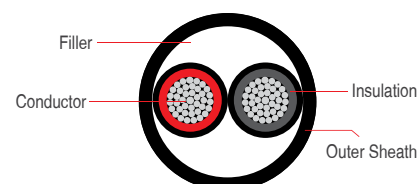
- Light Weight
- Good Thermal Properties than PVC variant
- Good Strength than PVC variant
- Low Current Leakage than PVC variant

Variant:

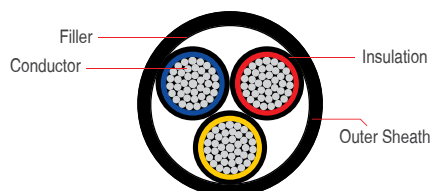
- FR • FRLS



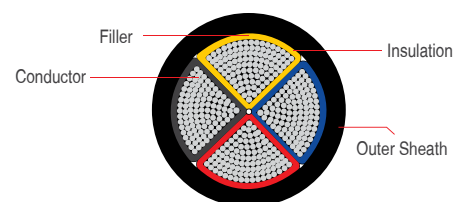
1 Core Unarmoured Power Cable



2 Core Unarmoured Power Cable



3 Core Unarmoured Power Cable



Triangular Shaped 4 Core Unarmoured Power Cable

Technical Data:

Insulation Resistance: 1 X 10¹⁴ Ohm-CM

Conductor Class: Class - 2 IEC 60228

Bending Radius: 10 X OD (OD= Overall Diameter of Cable)

Voltage Rated: 0.6 / 1.0 (1.2 Kv)

Test Voltage: 3500 Volts

Temperature Range: -15°C to +90°C

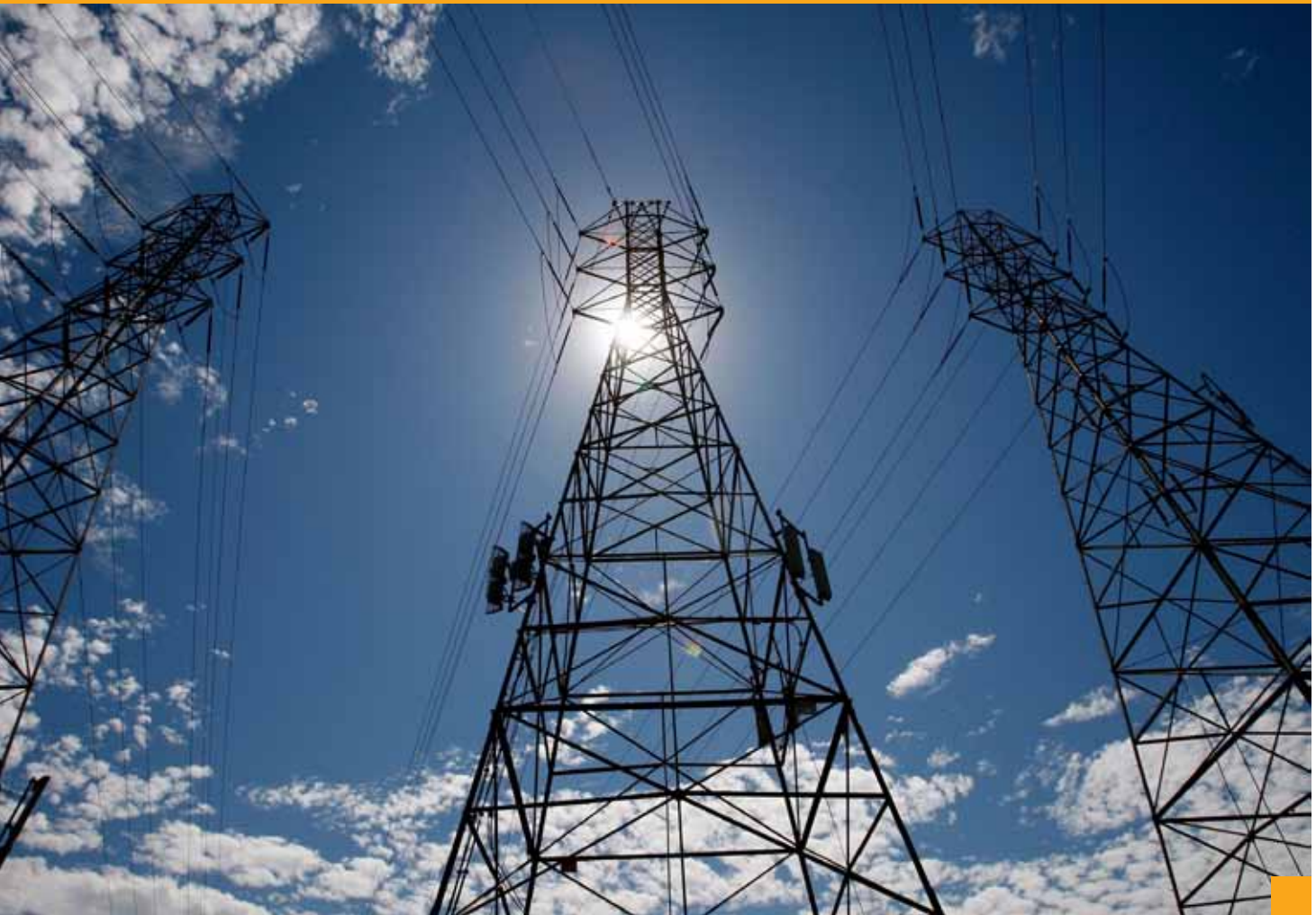
Short Circuiting Temp: 250°C



www.suncables.com

Application:

- General & Industrial Application Plant Wiring
- Over Group Cables





**DIMENSIONAL TABLES, POWER CABLES – ALUMINIUM / XLPE / PVC
SINGLE CORE AL. COND. XLPE INSULATED & PVC SHEATHED CABLES ACCORDING TO IEC 60502**

Core and Size SQ MM	Stranding (Minimum No of strands)	Nominal Thickness of Insulation mm	Nominal Overall Diameter mm	Approx. Weight kg/km	Max DC Resistance at 20°C	Current rating Amp
1 Core Cables						
1C x 0.5 mm						
1C x 0.75						
1C x 1.0						
1C x 1.5						
1C x 2.5						
1C X 4.0						
2 Core Cables						
2C x 0.5						
2Cx 0.75						
2C x 1.0						
2C x 1.5						
2C x 2.5						
2C X 4.0						
3 Core Cables						
3C x 0.5						
3Cx 0.75						
3C x 1.0						
3C x 1.5						
3C x 2.5						
3C X 4.0						
4 Core Cables						
4C x 0.5						
4Cx 0.75						
4C x 1.0						
4C x 1.5						
4C x 2.5						
4C X 4.0						
5 Core Cables						
5C x 0.5						
5Cx 0.75						
5C x 1.0						
5C x 1.5						
5C x 2.5						
5C X 4.0						





TWO CORE AL. COND. XLPE INSULATED & PVC SHEATHED CABLES ACCORDING TO IEC 60502

Core and Size SQ MM	Stranding (Minimum No of strands)	Nominal Thickness of Insulation mm	Nominal Overall Diameter mm	Approx. Weight kg/km	Max DC Resistance at 20°C	Current rating Amp
2 X 4.0	7	0.7	12.4	154.68	7.41	38
2 X 6.0	7	0.7	13.4	179.83	4.61	49
2 X 10.0	7	0.7	15.0	225.30	3.08	67
2 X 16.0	7	0.7	16.8	281.40	1.91	91
2 X 25.0	7	0.9	17.2	348.96	1.20	108
2 x 35.0	7	0.9	18.9	434.82	0.868	135
2 x 50.0	19	1	21.0	562.72	0.641	164
2 x 70.0	19	1.1	23.8	736.85	0.443	211
2 x 95.0	19	1.1	26.4	914.21	0.320	257
2 x 120.0	37	1.2	29.0	1120.46	0.253	300





THREE CORE AL. COND. XLPE INSULATED & PVC SHEATHED CABLES ACCORDING TO IEC 60502

Core and Size SQ MM	Stranding (Minimum No of strands)	Nominal Thickness of Insulation mm	Nominal Overall Diameter mm	Approx. Weight kg/km	Max DC Resistance at 20°C	Current rating Amp
3 X 4.0	7	0.7	13.0	179.00	7.41	32
3 X 6.0	7	0.7	14.1	211.61	4.61	42
3 X 10.0	7	0.7	15.8	271.63	3.08	58
3 X 16.0	7	0.7	17.8	350.06	1.91	77
3 X 25.0	7	0.9	19.8	472.23	1.20	97
3 X 35.0	7	0.9	21.9	596.30	0.868	120
3 X 50.0	19	1	25.1	790.24	0.641	146
3 X 70.0	19	1.1	28.5	1044.65	0.443	187
3 X 95.0	19	1.1	32.1	1337.68	0.320	227
3 X 120.0	37	1.2	35.4	1645.56	0.253	263
3 X 150.0	37	1.4	39.3	2012.60	0.206	304
3 X 185.0	37	1.6	43.7	2491.95	0.164	347
3 X 240.0	61	1.7	48.6	3124.03	0.125	409





FOUR CORE AL. COND. XLPE INSULATED & PVC SHEATHED CABLES ACCORDING TO IEC 60502

Core and Size SQ MM	Stranding (Number of Strand/Strand Diameter)	Nominal Thickness of Insulation mm	Nominal Overall Diameter mm	Approx. Weight kg/km	Max DC Resistance at 20°C	Current rating Amp
4 X 4.0	7	0.7	13.0	179.00	7.41	32
4 X 6.0	7	0.7	14.1	211.61	4.61	42
4 X 10.0	7	0.7	15.8	271.63	3.08	58
4 X 16.0	7	0.7	17.8	350.06	1.91	77
4 X 25.0	7	0.9	19.8	472.23	1.20	97
4 X 35.0	7	0.9	21.9	596.30	0.868	120
4 X 50.0	19	1	25.1	790.24	0.641	146
4 X 70.0	19	1.1	28.5	1044.65	0.443	187
4 X 95.0	19	1.1	32.1	1337.68	0.320	227
4 X 120.0	37	1.2	35.4	1645.56	0.253	263
4 X 150.0	37	1.4	39.3	2012.60	0.206	304
4 X 185.0	37	1.6	43.7	2491.95	0.164	347



UNARMoured CABLES

Rigid UnArmoured - Economic Al /PVC /PVC



RIGID CABLES

Rigid UnArmoured - Economic Al /PVC /PVC

Category: Rigid Cables

Sub Category: UnArmoured Cables 1.1 KV

Main Characteristics: Economical

Name: 1.1 KV Rigid Un Armoured Al / PVC / PVC Cables

Part No. AYY

Approval: IEC 60502-1, BS: 6346

Construction:

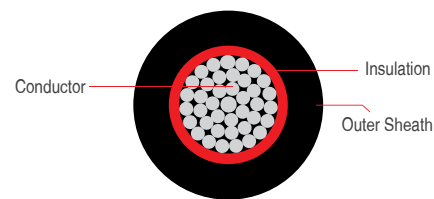
- **Class:** 2 Stranded Aluminium Wire as per BS 6360 / IEC 60228
- **Insulation:** PVC (Poly Vinyl Chloride) Type A or C as per IS 5831
- **Core Identification:**
 - 1 Core: **Black / Red / White**
 - 2 Core: **Red, Black**
 - 3 Core: **Red, Yellow, Blue**
 - 4 Core: **Red, Yellow, Blue & Black**
- **Inner Sheath:** PVC ST1 or ST2 Grade as per IEC 60502/ BS : 6469
- **Outer Sheath:** PVC ST1 or ST2 Grade as per IEC 60502/ BS : 6469

Product Feature:

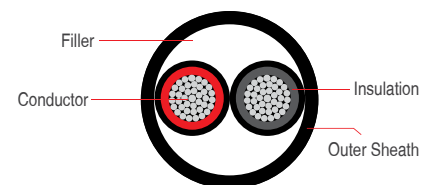
- Light Weight
- Better Fire Properties than XLPE variant
- Better UV Properties than XLPE variant
- Better Flexibility than XLPE variant

Variant:

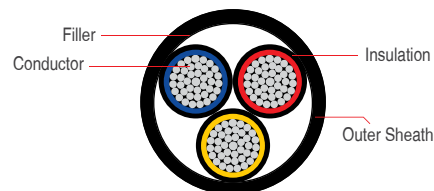
- HR-90 Degree
- FR
- FRLS



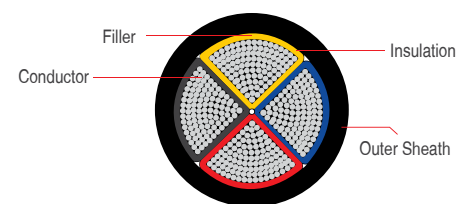
1 Core Unarmoured Power Cable



2 Core Unarmoured Power Cable



3 Core Unarmoured Power Cable



Triangular Shaped 4 Core Unarmoured Power Cable

Technical Data:

Insulation Resistance: 1×10^{13} Ohm-Cm

Conductor Class: Class - 2 IEC 60028 / IS: 8130/848

Bending Radius: 10X OD (OD= Overall Diameter of Cable)

Voltage Rated: 0.6 / 1.0 Kv (1.2 Kv)

Test Voltage: 3500 Volts

Temperature Range: -15°C to +70°C

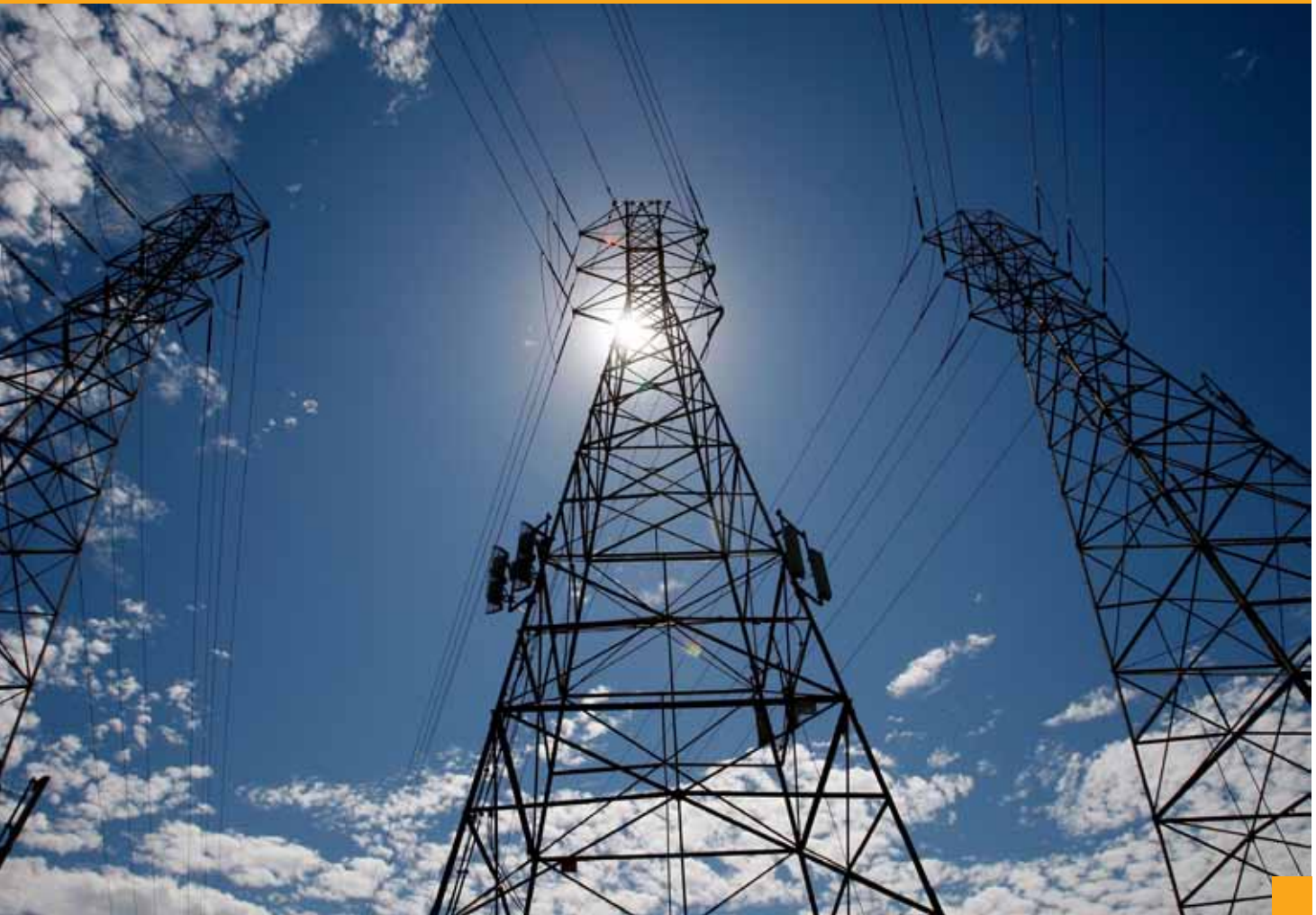
Short Circuiting Temp: 160°C



www.suncables.com

Application:

- General & Industrial Application Plant Wiring
- Over Group Cables





**DIMENSIONAL TABLES, POWER CABLES – ALUMINIUM / PVC / PVC
SINGLE CORE AL COND. PVC INSULATED & PVC SHEATHED CABLES ACCORDING TO IEC 60502**

Core and Size SQ MM	Stranding (Minimum No of strands)	Nominal Thickness of Insulation mm	Nominal Overall Diameter mm	Approx. Weight kg/km	Max DC Resistance at 20°C	Current rating Amp
1 X 4.0	7	1	9.3	108.68	7.41	34
1 X 6.0	7	1	9.8	122.49	4.61	43
1 X 10.0	7	1	10.6	147.22	3.08	60
1 X 16.0	7	1	11.5	178.20	1.91	81
1 X 25.0	7	1.2	13.0	232.82	1.20	112
1 X 35.0	7	1.2	14.1	279.93	0.868	139
1 X 50.0	19	1.4	15.8	358.94	0.641	169
1 X 70.0	19	1.4	17.2	442.34	0.443	217
1 X 95.0	19	1.6	19.3	558.41	0.320	265
1 X 120.0	37	1.6	20.8	663.05	0.253	308
1 X 150.0	37	1.8	22.8	798.91	0.206	356
1 X 185.0	37	2	24.8	958.82	0.164	407
1 X 240.0	61	2.2	27.6	1199.81	0.125	482
1 X 300.0	61	2.4	30.1	1451.78	0.100	557
1 X 400.0	61	2.6	34.3	1880.36	0.0778	671
1 X 500.0	61	2.8	38.0	2309.18	0.0605	775
1 X 630.0	91	2.8	40.8	2787.12	0.0469	900





TWO CORE AL COND. PVC INSULATED & PVC SHEATHED CABLES ACCORDING TO IEC 60502

Core and Size SQ MM	Stranding (Minimum No of strands)	Nominal Thickness of Insulation mm	Nominal Overall Diameter mm	Approx. Weight kg/km	Max DC Resistance at 20°C	Current rating Amp
2 X 4.0	7	1	13.6	186.31	7.41	31
2 X 6.0	7	1	14.6	213.85	4.61	39
2 X 10.0	7	1	16.1	260.16	3.08	54
2 X 16.0	7	1	18.1	327.14	1.91	73
2 X 25.0	7	1.2	18.5	405.54	1.20	89
2 x 35.0	7	1.2	20.2	498.01	0.868	111
2 x 50.0	19	1.4	22.8	653.56	0.641	135
2 x 70.0	19	1.4	25.1	824.48	0.443	173
2 x 95.0	19	1.6	28.5	1052.35	0.320	210
2 x 120.0	37	1.6	30.7	1254.67	0.253	244





THREE CORE AL COND. PVC INSULATED & PVC SHEATHED CABLES ACCORDING TO IEC 60502

Core and Size	Stranding (Minimum No of strands)	Nominal Thickness of Insulation mm	Nominal Overall Diameter mm	Approx. Weight kg/km	Max DC Resistance at 20°C	Current rating Amp
SQ MM						
3 X 4.0	7	1	14.3	219.69	7.41	26
3 X 6.0	7	1	15.4	255.80	4.61	33
3 X 10.0	7	1	17.1	320.86	3.08	46
3 X 16.0	7	1	19.2	410.46	1.91	61
3 X 25.0	7	1.2	21.2	549.01	1.20	78
3 X 35.0	7	1.2	23.3	682.62	0.868	96
3 X 50.0	19	1.4	26.9	915.16	0.641	117
3 X 70.0	19	1.4	29.9	1166.45	0.443	150
3 X 95.0	19	1.6	34.4	1531.82	0.320	183
3 X 120.0	37	1.6	37.2	1835.07	0.253	212
3 X 150.0	37	1.8	41.1	2235.32	0.206	245
3 X 185.0	37	2	45.6	2753.89	0.164	280
3 X 240.0	61	2.2	50.9	3466.50	0.125	330





FOUR CORE AL COND. PVC INSULATED & PVC SHEATHED CABLES ACCORDING TO IEC 60502

Core and Size SQ MM	Stranding (Number of Strand/Strand Diameter)	Nominal Thickness of Insulation mm	Nominal Overall Diameter mm	Approx. Weight kg/km	Max DC Resistance at 20°C	Current rating Amp
4 X 4.0	7	1	16.0	281.65	7.41	26
4 X 6.0	7	1	17.2	328.76	4.61	33
4 X 10.0	7	1	19.2	414.59	3.08	46
4 X 16.0	7	1	21.3	523.85	1.91	61
4 X 25.0	7	1.2	25.0	712.60	1.20	78
4 X 35.0	7	1.2	27.6	891.93	0.868	96
4 X 50.0	19	1.4	32.5	1235.92	0.641	117
4 X 70.0	19	1.4	36.3	1577.98	0.443	150
4 X 95.0	19	1.6	41.3	2025.43	0.320	183
4 X 120.0	37	1.6	45.3	2480.90	0.253	212
4 X 150.0	37	1.8	50.1	3023.12	0.206	245
4 X 185.0	37	2	55.1	3661.46	0.164	280



1.1 KV Rigid Un Armoured Al / PVC / PVC Cables



1.1 KV Rigid Un Armoured Al / PVC / PVC Cables



UNARMoured CABLES

Rigid UnArmoured - Space Saving Cu /PVC /PVC



RIGID CABLES

Rigid UnArmoured - Space Saving Cu /PVC /PVC

Category: Rigid Cables

Sub Category: UnArmoured Cables 1.1 KV

Main Characteristics: General

Name: 1.1 KV Rigid Un Armoured Cu / PVC / PVC Cables

Part No. YY

Approval: IEC 60502, BS 6346

Construction:

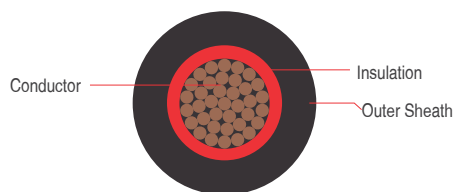
- **Class:** 2 Stranded Copper Wire as per BS 6360 / IEC 60228
- **Insulation:** PVC Type A or C as per IEC 60502/ BS : 6469
- **Core Identification:**
 - 1 Core: **Black / Red / White**
 - 2 Core: **Red, Black**
 - 3 Core: **Red, Yellow, Blue**
 - 4 Core: **Red, Yellow, Blue & Black**
- **Inner Sheath:** PVC (Poly Vinyl Chloride) ST1 or ST2 Grade as per IEC 60502/ BS : 6469
- **Outer Sheath:** PVC (Poly Vinyl Chloride) ST1 or ST2 Grade as per IEC 60502/ BS : 6469

Product Feature:

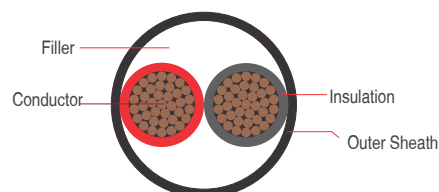
- Requires less space for installation
- Better Physical Strength than Aluminium
- Better Fire Properties than XLPE variant
- Better UV Properties than XLPE variant
- Better Flexibility than XLPE variant

Variant:

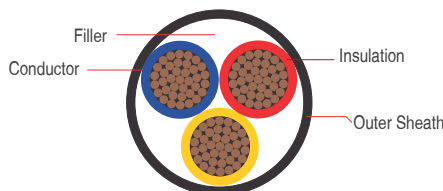
- HR-90 Degree • FR • FRLS



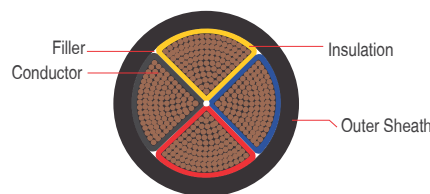
1 Core Unarmoured Power Cable



2 Core Unarmoured Power Cable



3 Core Unarmoured Power Cable



Sector shaped 4 Unarmoured Power Cable

Technical Data:

Insulation Resistance: 1×10^{13} Ohm-Cm

Conductor Class: Class - 2 IEC 60028 / IS: 8130/84

Bending Radius: 10X OD (OD= Overall Diameter of Cable)

Voltage Rated: 0.6 / 1.0 Kv (1.2 Kv)

Test Voltage: 3500 Volts

Temperature Range: -15°C to +70°C

Short Circuiting Temp: 160°C



www.suncables.com

Application:

- General & Industrial Application Plant Wiring
- Over Group Cables





**DIMENSIONAL TABLES, POWER CABLES – COPPER / PVC / PVC
SINGLE CORE CU COND. PVC INSULATED & PVC SHEATHED CABLES ACCORDING TO IEC 60502**

Core and Size	Stranding (Minimum No of strands)	Nominal Thickness of Insulation mm	Nominal Overall Diameter mm	Approx. Weight kg/km	Max DC Resistance at 20°C	Current rating Amp
SQ MM						
1 X 4.0	7	1	9.3	133.66	4.61	43
1 X 6.0	7	1	9.8	159.97	3.08	55
1 X 10.0	7	1	10.6	210.66	1.83	76
1 X 16.0	7	1	11.5	278.13	1.15	102
1 X 25.0	7	1.2	13.0	388.25	0.727	146
1 X 35.0	7	1.2	14.1	498.81	0.524	181
1 X 50.0	19	1.4	15.8	672.99	0.387	219
1 X 70.0	19	1.4	17.2	888.42	0.268	281
1 X 95.0	19	1.6	19.3	1146.99	0.193	341
1 X 120.0	37	1.6	20.8	1416.44	0.153	396
1 X 150.0	37	1.8	22.8	1735.68	0.124	456
1 X 185.0	37	2	24.8	2118.63	0.0991	521
1 X 240.0	61	2.2	27.6	2712.77	0.0754	615
1 X 300.0	61	2.4	30.1	3341.43	0.0601	709
1 X 400.0	61	2.6	34.3	4374.69	0.0470	852
1 X 500.0	61	2.8	38.0	5465.65	0.0366	982
1 X 630.0	91	2.8	40.8	6814.34	0.0283	1138

SUN 1.1 KV Rigid Un Armoured Cu / PVC / PVC Cables

SUN 1.1 KV Rigid Un Armoured Cu / PVC / PVC Cables





TWO CORE CU COND PVC INSULATED & PVC SHEATHED CABLES ACCORDING TO IEC 60502

Core and Size SQ MM	Stranding (Minimum No of strands)	Nominal Thickness of Insulation mm	Nominal Overall Diameter mm	Approx. Weight kg/km	Max DC Resistance at 20°C	Current rating Amp
2 X 4.0	7	1	13.6	236.28	4.61	40
2 X 6.0	7	1	14.6	288.80	3.08	51
2 X 10.0	7	1	16.1	387.05	1.83	70
2 X 16.0	7	1	18.1	526.99	1.15	94
2 X 25.0	7	1.2	18.5	716.41	0.727	119
2 x 35.0	7	1.2	20.2	935.76	0.524	148
2 x 50.0	19	1.4	22.8	1281.64	0.387	180
2 x 70.0	19	1.4	25.1	1716.64	0.268	232
2 x 95.0	19	1.6	28.5	2229.51	0.193	282
2 x 120.0	37	1.6	30.7	2761.43	0.153	328





THREE CORE CU COND PVC INSULATED & PVC SHEATHED CABLES ACCORDING TO IEC 60502

Core and Size	Stranding (Minimum No of strands)	Nominal Thickness of Insulation mm	Nominal Overall Diameter mm	Approx. Weight kg/km	Max DC Resistance at 20°C	Current rating Amp
SQ MM						
3 X 4.0	7	1	14.3	294.63	4.61	34
3 X 6.0	7	1	15.4	368.21	3.08	43
3 X 10.0	7	1	17.1	511.19	1.83	60
3 X 16.0	7	1	19.2	710.22	1.15	80
3 X 25.0	7	1.2	21.2	1015.31	0.727	101
3 X 35.0	7	1.2	23.3	1339.25	0.524	126
3 X 50.0	19	1.4	26.9	1857.29	0.387	153
3 X 70.0	19	1.4	29.9	2504.69	0.268	196
3 X 95.0	19	1.6	34.4	3297.55	0.193	238
3 X 120.0	37	1.6	37.2	4095.21	0.153	276
3 X 150.0	37	1.8	41.1	5045.63	0.124	319
3 X 185.0	37	2	45.6	6233.32	0.0991	364
3 X 240.0	61	2.2	50.9	8005.38	0.0754	430



1.1 KV Rigid Un Armoured Cu / PVC / PVC Cables



1.1 KV Rigid Un Armoured Cu / PVC / PVC Cables





FOUR CORE PVC CU COND INSULATED & PVC SHEATHED CABLES ACCORDING TO IEC 60502

Core and Size SQ MM	Stranding (Number of Strand/Strand Diameter)	Nominal Thickness of Insulation mm	Nominal Overall Diameter mm	Approx. Weight kg/km	Max DC Resistance at 20°C	Current rating Amp
4 X 4.0	7	1	15.4	358.64	4.61	34
4 X 6.0	7	1	16.6	452.05	3.08	43
4 X 10.0	7	1	18.6	644.85	1.83	60
4 X 16.0	7	1	21.0	905.06	1.15	80
4 X 25.0	7	1.2	25.0	1334.33	0.727	101
4 X 35.0	7	1.2	27.6	1767.43	0.524	126
4 X 50.0	19	1.4	32.5	2492.08	0.387	153
4 X 70.0	19	1.4	36.3	3362.30	0.268	196
4 X 95.0	19	1.6	41.3	4379.75	0.193	238
4 X 120.0	37	1.6	45.3	5494.42	0.153	276
4 X 150.0	37	1.8	50.1	6770.20	0.124	319
4 X 185.0	37	2	55.1	8300.70	0.0991	364



UNARMoured CABLES

Rigid UnArmoured - Space Saving Cu /XLPE /PVC



RIGID CABLES

Rigid UnArmoured - Space Saving Cu /XLPE /PVC

Category: Rigid Cables

Sub Category: UnArmoured Cables 1.1 KV

Main Characteristics: Space Saving

Name: 1.1 KV Rigid Un Armoured Copper / XLPE /PVC Cables
Part No. 2XY

Approval: IEC 60502/Pt-1, BS: 6724

Construction:

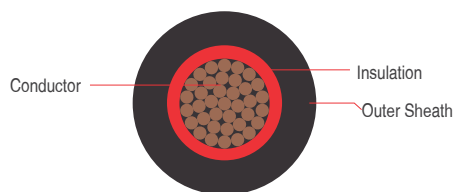
- **Class:** 2 Stranded Copper Wire as per BS 6360 / IEC 60228
- **Insulation:** XLPE as per IEC 60502
- **Core Identification:**
 - 1 Core: **Black / Red / White**
 - 2 Core: **Red, Black**
 - 3 Core: **Red, Yellow, Blue**
 - 4 Core: **Red, Yellow, Blue & Black**
- **Inner Sheath:** PVC (Poly Vinyl Chloride) ST2 Grade as per IEC 60502 / BS : 6469
- **Outer Sheath:** PVC (Poly Vinyl Chloride) ST2 Grade as per IEC 60502 / BS : 6469

Product Feature:

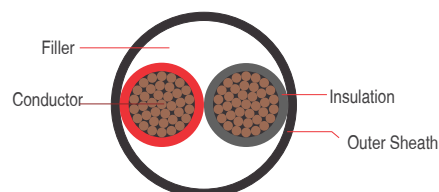
- Requires less space for installation
- Good Thermal Properties than PVC variant
- Very Good Physical Strength than PVC variant
- Low Current Leakage than PVC variant

Variant:

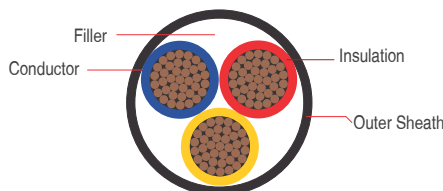
- FR • FRLS



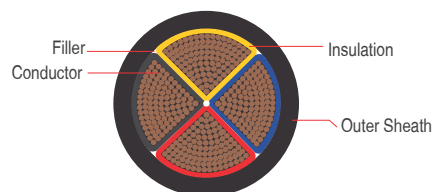
1 Core Unarmoured Power Cable



2 Core Unarmoured Power Cable



3 Core Unarmoured Power Cable



Sector shaped 4 Unarmoured Power Cable

Technical Data:

Insulation Resistance: 1×10^{14} Ohm-Cm

Conductor Class: Class - 2 IEC 60028 / IS:8130/84

Bending Radius: 10X OD (OD= Overall Diameter of Cable)

Voltage Rated: 0.6 / 1.0 Kv (1.2 Kv)

Test Voltage: 3500 Volts

Temperature Range: -15°C to +90°C

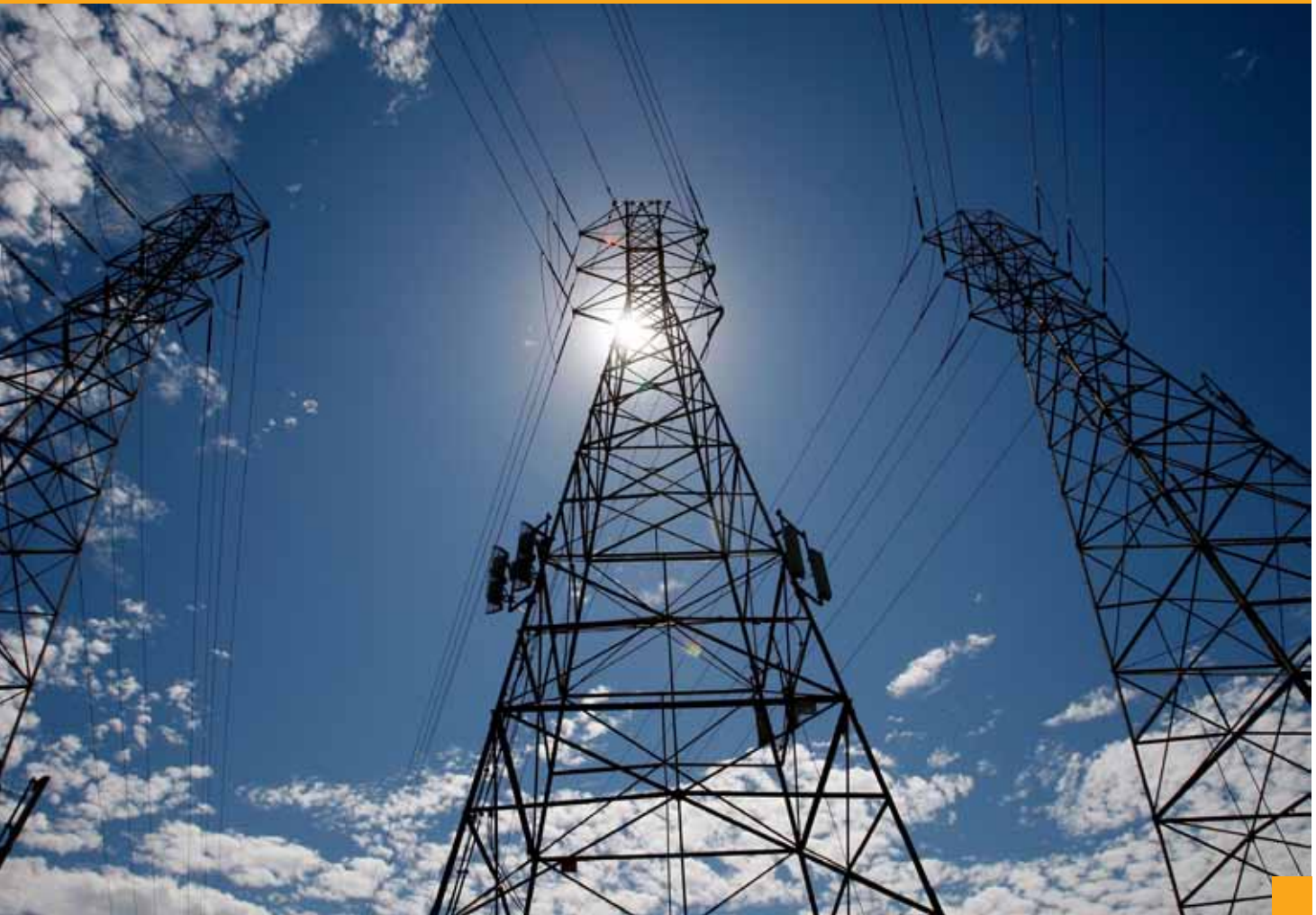
Short Circuiting Temp: 250°C



www.suncables.com

Application:

- General & Industrial Application Plant Wiring
- Over Group Cables





**DIMENSIONAL TABLES, POWER FLEXIBLE CABLES – COPPER / XLPE / PVC
SINGLE CORE CU COND. XLPE INSULATED & PVC SHEATHED CABLES ACCORDING TO IEC 60502**

Core and Size	Stranding (Minimum No of strands)	Nominal Thickness of Insulation mm	Nominal Overall Diameter mm	Approx. Weight kg/km	Max DC Resistance at 20°C	Current rating Amp
SQ MM						
1 X 4.0	7	0.7	8.7	117.53	4.61	53
1 X 6.0	7	0.7	9.2	142.59	3.08	67
1 X 10.0	7	0.7	10.0	191.30	1.83	92
1 X 16.0	7	0.7	10.9	256.53	1.15	124
1 X 25.0	7	0.9	12.4	361.07	0.727	182
1 X 35.0	7	0.9	13.5	468.53	0.524	226
1 X 50.0	19	1	15.0	629.90	0.387	275
1 X 70.0	19	1.1	16.6	844.68	0.268	353
1 X 95.0	19	1.1	18.3	1078.87	0.193	430
1 X 120.0	37	1.2	20.0	1349.71	0.153	500
1 X 150.0	37	1.4	21.9	1657.22	0.124	577
1 X 185.0	37	1.6	23.9	2026.95	0.0991	661
1 X 240.0	61	1.7	26.5	2593.45	0.0754	781
1 X 300.0	61	1.8	28.9	3192.32	0.0601	902
1 X 400.0	61	2	33.0	4195.82	0.0470	1085
1 X 500.0	61	2.2	36.7	5256.90	0.0366	1253
1 X 630.0	91	2.4	40.0	6616.38	0.0283	1454



1.1 KV Rigid Un Armoured Copper / XLPE /PVC Cables



1.1 KV Rigid Un Armoured Copper / XLPE /PVC Cables





TWO CORE CU COND. XLPE INSULATED & PVC SHEATHED CABLES ACCORDING TO IEC 60502

Core and Size	Stranding (Minimum No of strands)	Nominal Thickness of Insulation mm	Nominal Overall Diameter mm	Approx. Weight kg/km	Max DC Resistance at 20°C	Current rating Amp
SQ MM						
2 X 4.0	7	0.7	12.4	204.64	4.61	49
2 X 6.0	7	0.7	13.4	254.77	3.08	63
2 X 10.0	7	0.7	15.0	352.18	1.83	86
2 X 16.0	7	0.7	16.8	481.25	1.15	115
2 X 25.0	7	0.9	17.2	659.83	0.727	149
2 x 35.0	7	0.9	18.9	872.57	0.524	185
2 x 50.0	19	1	21.0	1190.80	0.387	225
2 x 70.0	19	1.1	23.8	1629.01	0.268	289
2 x 95.0	19	1.1	26.4	2091.37	0.193	352
2 x 120.0	37	1.2	29.0	2627.23	0.153	410





THREE CORE CU COND. XLPE INSULATED & PVC SHEATHED CABLES ACCORDING TO IEC 60502

Core and Size	Stranding (Minimum No of strands)	Nominal Thickness of Insulation mm	Nominal Overall Diameter mm	Approx. Weight kg/km	Max DC Resistance at 20°C	Current rating Amp
SQ MM						
3 X 4.0	7	0.7	13.0	253.94	4.61	42
3 X 6.0	7	0.7	14.1	324.02	3.08	54
3 X 10.0	7	0.7	15.8	461.96	1.83	75
3 X 16.0	7	0.7	17.8	649.83	1.15	100
3 X 25.0	7	0.9	19.8	938.53	0.727	127
3 X 35.0	7	0.9	21.9	1252.93	0.524	158
3 X 50.0	19	1	25.1	1732.36	0.387	192
3 X 70.0	19	1.1	28.5	2382.89	0.268	246
3 X 95.0	19	1.1	32.1	3103.42	0.193	298
3 X 120.0	37	1.2	35.4	3905.70	0.153	346
3 X 150.0	37	1.4	39.3	4822.91	0.124	399
3 X 185.0	37	1.6	43.7	5971.38	0.0991	456
3 X 240.0	61	1.7	48.6	7662.91	0.0754	538



1.1 KV Rigid Un Armoured Copper / XLPE /PVC Cables



1.1 KV Rigid Un Armoured Copper / XLPE /PVC Cables





FOUR CORE CU COND. XLPE INSULATED & PVC SHEATHED CABLES ACCORDING TO IEC 60502

Core and Size SQ MM	Stranding (Number of Strand/Strand Diameter)	Nominal Thickness of Insulation mm	Nominal Overall Diameter mm	Approx. Weight kg/km	Max DC Resistance at 20°C	Current rating Amp
4 X 4.0	7	0.7	14.0	307.74	4.61	42
4 X 6.0	7	0.7	15.2	398.38	3.08	54
4 X 10.0	7	0.7	17.1	577.28	1.83	75
4 X 16.0	7	0.7	19.4	827.99	1.15	100
4 X 25.0	7	0.9	23.4	1234.67	0.727	127
4 X 35.0	7	0.9	26.1	1654.97	0.524	158
4 X 50.0	19	1	30.0	2295.31	0.387	192
4 X 70.0	19	1.1	34.7	3200.73	0.268	246
4 X 95.0	19	1.1	38.8	4125.32	0.193	298
4 X 120.0	37	1.2	43.2	5242.99	0.153	346
4 X 150.0	37	1.4	48.0	6474.37	0.124	399
4 X 185.0	37	1.6	53.0	7955.04	0.0991	456



UNARMoured CABLES

Rigid UnArmoured - Low Bending Diameter Al / XLPE /PVC



RIGID CABLES

Rigid UnArmoured - Low Bending Diameter Al / XLPE /PVC

Category: Rigid Cables

Sub Category: UnArmoured Cables 1.1 KV

Main Characteristics: Low Bending Dia

Name: 1.1 KV Rigid Un Armoured Aluminium / XLPE / PVC Cables, Part No. A2XY

Approval: Generally conforming to IEC 60502 Pt-1, BS:6724

Construction:

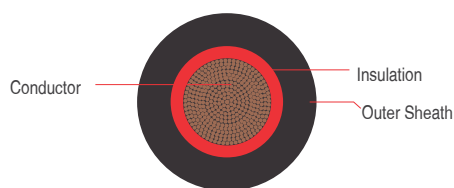
- **Class:** 5 Stranded Aluminium Wire as per BS 6360 / IEC 60228
- **Insulation:** XLPE as per IEC 60502
- **Core Identification:**
 - 1 Core: **Black / Red / White**
 - 2 Core: **Red, Black**
 - 3 Core: **Red, Yellow, Blue**
 - 4 Core: **Red, Yellow, Blue & Black**
- **Inner Sheath:** (Poly Vinyl Chloride) ST2 Grade as per IEC 60502/ BS : 6469
- **Outer Sheath:** (Poly Vinyl Chloride) ST2 Grade as per IEC 60502/ BS : 6469

Product Feature:

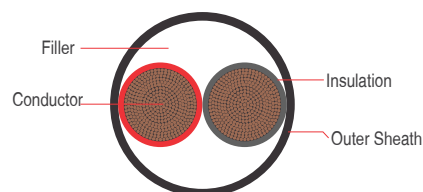
- Light Weight
- Can take acute bends
- Can take occasional Flexing

Variant:

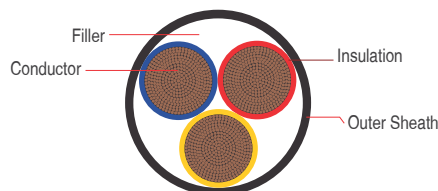
- FR • FRLS



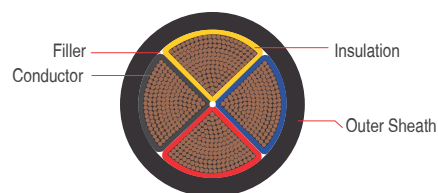
1 Core Unarmoured Power Cable



2 Core Unarmoured Power Cable



3 Core Unarmoured Power Cable



Sector shaped 4 Unarmoured Power Cable

Technical Data:

Insulation Resistance: 1×10^{14} Ohm-Cm

Conductor Class: Class - 2 IEC 60028 / IS:8130/84

Bending Radius: 10X OD (OD= Overall Diameter of Cable)

Voltage Rated: 0.6 / 1.0 Kv (1.2 Kv)

Test Voltage: 3500 Volts

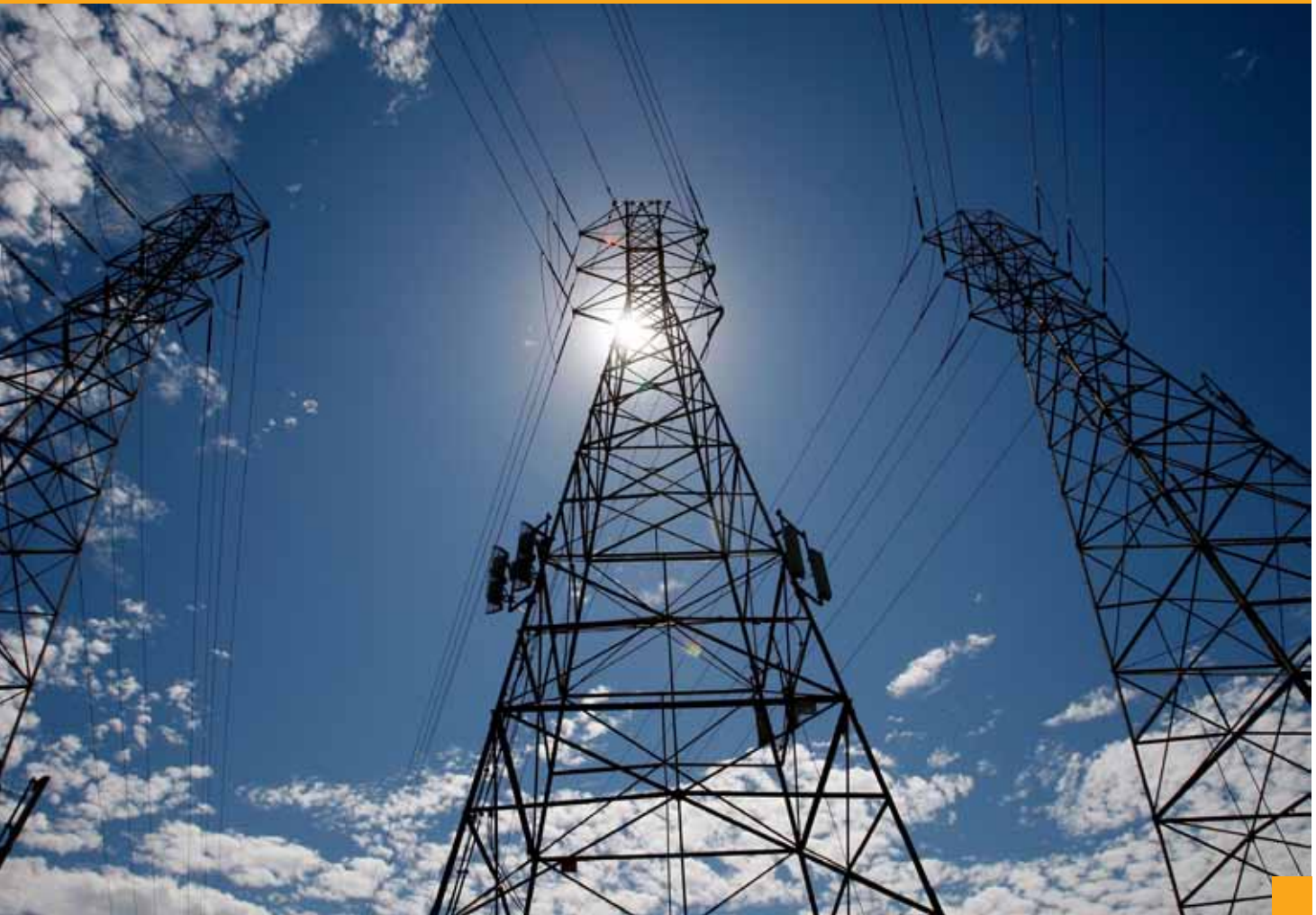
Temperature Range: -15°C to +90°C

Short Circuiting Temp: 250°C



Application:

- General & Industrial Application Plant Wiring
- Over Group Cables
- Area where low bending radius are required
- Areas where frequent shifting are done





**DIMENSIONAL TABLES, POWER CABLES – ALUMINIUM / XLPE / PVC
SINGLE CORE AL. COND. XLPE INSULATED & PVC SHEATHED CABLES ACCORDING TO IEC 60502**

Core and Size	Stranding (Minimum No of strands)	Nominal Thickness of Insulation mm	Nominal Overall Diameter mm	Approx. Weight kg/km	Max DC Resistance at 20°C	Current rating Amp
SQ MM						
1 X 4.0	56/0.30	0.7	9.0	102.90	7.41	42
1 X 6.0	84/0.30	0.7	10.0	123.81	4.61	54
1 X 10.0	80/0.40	0.7	11.0	150.61	3.08	75
1 X 16.0	126/0.40	0.7	12.0	182.00	1.91	101
1 X 25.0	196/0.40	0.9	13.9	239.91	1.20	138
1 X 35.0	276/0.40	0.9	15.2	288.48	0.868	172
1 X 50.0	396/0.40	1	17.2	365.18	0.641	210
1 X 70.0	360/0.50	1.1	19.3	465.39	0.443	271
1 X 95.0	475/0.50	1.1	21.7	573.05	0.320	332
1 X 120.0	608/0.580	1.2	23.6	688.16	0.253	387
1 X 150.0	756/0.50	1.4	24.3	791.08	0.206	448
1 X 185.0	925/0.50	1.6	26.8	954.90	0.164	515
1 X 240.0	1221/0.50	1.7	31.4	1223.07	0.125	611
1 X 300.0	1525/0.50	1.8	34.4	1469.13	0.100	708
1 X 400.0	2013/0.50	2	39.2	1913.42	0.0778	856
1 X 500.0	1769/0.50	2.2	43.4	2345.42	0.0605	991
1 X 630.0	2257/0.50	2.4	48.3	2898.98	0.0469	1154



1.1 KV Rigid Un Armoured Aluminium / XLPE / PVC Cables



1.1 KV Rigid Un Armoured Aluminium / XLPE / PVC Cables





TWO CORE AL. COND. XLPE INSULATED & PVC SHEATHED CABLES ACCORDING TO IEC 60502

Core and Size SQ MM	Stranding (Minimum No of strands)	Nominal Thickness of Insulation mm	Nominal Overall Diameter mm	Approx. Weight kg/km	Max DC Resistance at 20°C	Current rating Amp
2 X 4.0	56/0.30	0.7	13.0	174.17	7.41	38
2 X 6.0	84/0.30	0.7	15.0	215.99	4.61	49
2 X 10.0	80/0.40	0.7	17.0	269.58	3.08	67
2 X 16.0	126/0.40	0.7	19.1	337.92	1.91	91
2 X 25.0	196/0.40	0.9	23.2	469.79	1.20	108
2 x 35.0	276/0.40	0.9	26.0	580.83	0.868	135
2 x 50.0	396/0.40	1	30.2	760.27	0.641	164
2 x 70.0	360/0.50	1.1	34.5	979.82	0.443	211
2 x 95.0	475/0.50	1.1	39.2	1218.87	0.320	257
2 x 120.0	608/0.580	1.2	43.1	1471.06	0.253	300





THREE CORE AL. COND. XLPE INSULATED & PVC SHEATHED CABLES ACCORDING TO IEC 60502

Core and Size SQ MM	Stranding (Minimum No of strands)	Nominal Thickness of Insulation mm	Nominal Overall Diameter mm	Approx. Weight kg/km	Max DC Resistance at 20°C	Current rating Amp
3 X 4.0	56/0.30	0.7	13.6	200.47	7.41	32
3 X 6.0	84/0.30	0.7	15.8	251.95	4.61	42
3 X 10.0	80/0.40	0.7	18.0	321.10	3.08	58
3 X 16.0	126/0.40	0.7	20.3	413.78	1.91	77
3 X 25.0	196/0.40	0.9	24.7	585.33	1.20	97
3 X 35.0	276/0.40	0.9	27.7	732.95	0.868	120
3 X 50.0	396/0.40	1	32.3	971.41	0.641	146
3 X 70.0	360/0.50	1.1	37.0	1268.15	0.443	187
3 X 95.0	475/0.50	1.1	42.5	1641.90	0.320	227
3 X 120.0	608/0.580	1.2	46.6	1992.66	0.253	263
3 X 150.0	756/0.50	1.4	48.0	2303.65	0.206	304
3 X 185.0	925/0.50	1.6	54.0	2873.95	0.164	347
3 X 240.0	1221/0.50	1.7	63.9	3719.33	0.125	409



1.1 KV Rigid Un Armoured Aluminium / XLPE / PVC Cables



1.1 KV Rigid Un Armoured Aluminium / XLPE / PVC Cables





FOUR CORE AL. COND. XLPE INSULATED & PVC SHEATHED CABLES ACCORDING TO IEC 60502

Core and Size	Stranding (Number of Strand/Strand Diameter)	Nominal Thickness of Insulation mm	Nominal Overall Diameter mm	Approx. Weight kg/km	Max DC Resistance at 20°C	Current rating Amp
SQ MM						
4 X 4.0	56/0.30	0.7	14.7	232.12	7.41	32
4 X 6.0	84/0.30	0.7	17.1	294.60	4.61	42
4 X 10.0	80/0.40	0.7	19.7	388.10	3.08	58
4 X 16.0	126/0.40	0.7	22.3	502.57	1.91	77
4 X 25.0	196/0.40	0.9	27.2	718.88	1.20	97
4 X 35.0	276/0.40	0.9	30.6	906.94	0.868	120
4 X 50.0	396/0.40	1	35.7	1210.97	0.641	146
4 X 70.0	360/0.50	1.1	41.3	1643.93	0.443	187
4 X 95.0	475/0.50	1.1	47.0	2062.13	0.320	227
4 X 120.0	608/0.580	1.2	52.1	2580.17	0.253	263
4 X 150.0	756/0.50	1.4	53.7	2991.68	0.206	304
4 X 185.0	925/0.50	1.6	59.9	3648.67	0.164	347



UNARMoured CABLES

Rigid UnArmoured - Low Bending Dia Cu /XLPE /PVC



RIGID CABLES

Rigid UnArmoured - Low Bending Dia Cu /XLPE /PVC

Category: Rigid Cables

Sub Category: UnArmoured Cables 1.1 KV

Main Characteristics: Low Bending Dia & Space Saving

Name: 1.1 KV Rigid Un Armoured Copper / XLPE / PVC Cables
Part No. 2XY

Approval: IEC 60502, BS 6724

Construction:

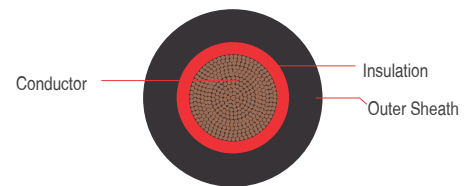
- **Class:** 5 Stranded Copper Wire as per BS 6360 / IEC 60228
- **Insulation:** XLPE as per IS: 7098/Pt-1/1988 / IEC 60502
- **Core Identification:**
 - 1 Core: **Black / Red / White**
 - 2 Core: **Red, Black**
 - 3 Core: **Red, Yellow, Blue**
 - 4 Core: **Red, Yellow, Blue & Black**
- **Inner Sheath:** PVC (Poly Vinyl Chloride) ST2 Grade as per IEC 60502/ BS: 6469
- **Outer Sheath:** PVC (Poly Vinyl Chloride) ST2 Grade as per IEC 60502/ BS: 6469

Product Feature:

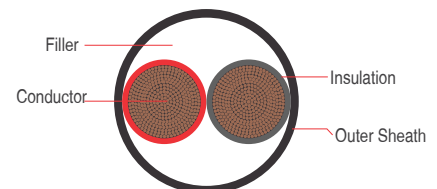
- Requires less space for installation
- Can take acute bends
- Can take occasional Flexing

Variant:

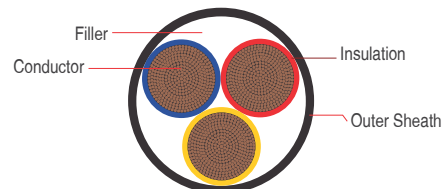
- FR • FRLS



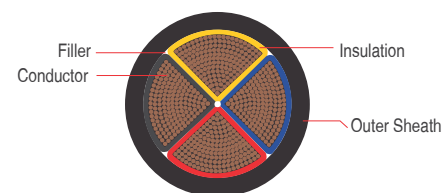
1 Core Unarmoured Power Cable



2 Core Unarmoured Power Cable



3 Core Unarmoured Power Cable



Sector shaped 4 Unarmoured Power Cable

Technical Data:

Insulation Resistance: 1×10^{14} Ohm-Cm

Conductor Class: Class - 2 IEC 60028 / IS: 8130/84

Bending Radius: 8 X OD (OD= Overall Diameter of Cable)

Voltage Rated: 0.6 / 1.0 Kv (1.2 Kv)

Test Voltage: 3500 Volts

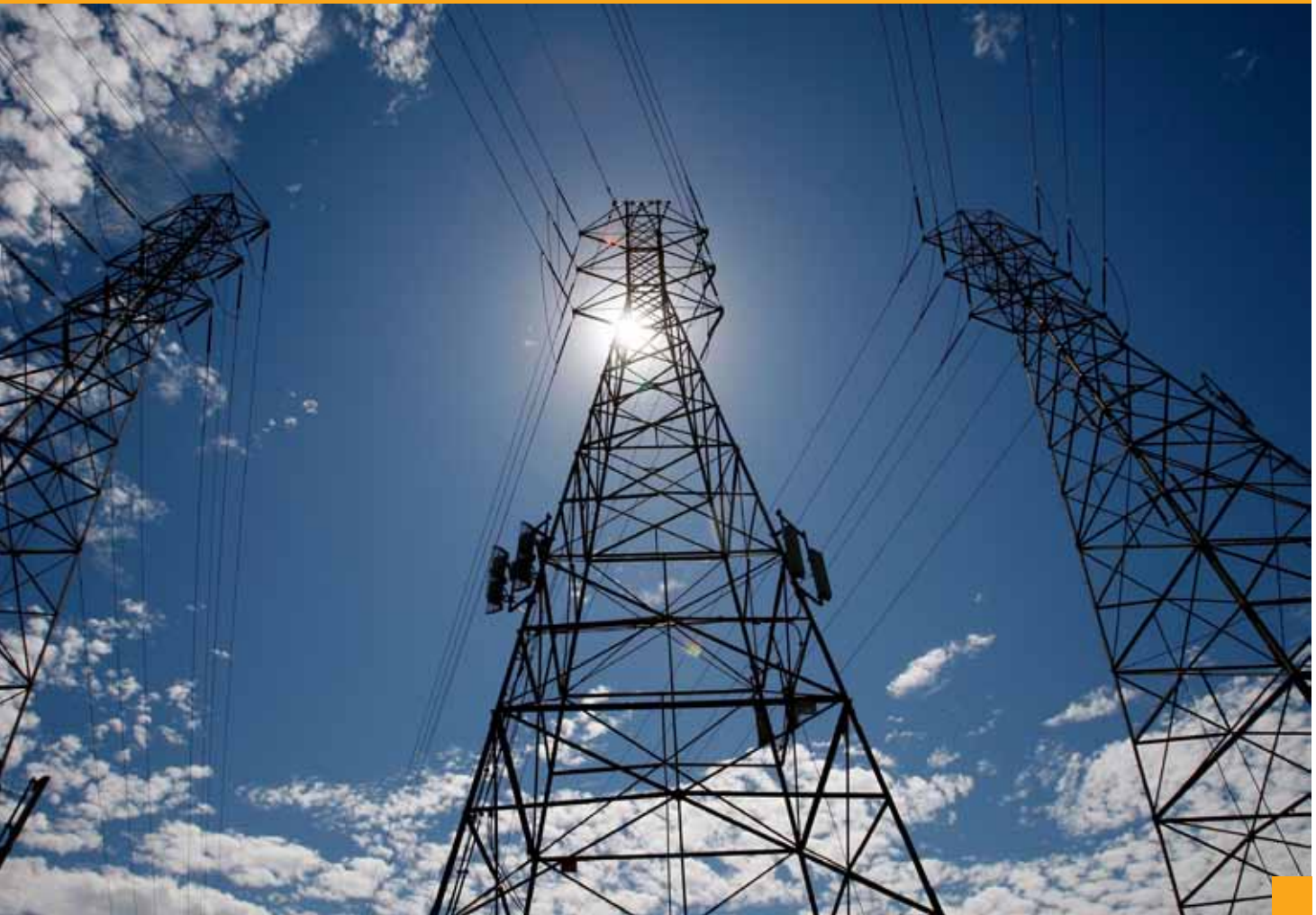
Temperature Range: -15°C to +90°C

Short Circuiting Temp: 250°C



Application:

- General & Industrial Application Plant Wiring
- Over Group Cables
- Area where low bending radius are required
- Areas where frequent shifting are done





**DIMENSIONAL TABLES, POWER FLEXIBLE CABLES – COPPER / XLPE / PVC
SINGLE CORE CU COND. XLPE INSULATED & PVC SHEATHED CABLES ACCORDING TO IEC 60502**

Core and Size	Stranding (Minimum No of strands)	Nominal Thickness of Insulation mm	Nominal Overall Diameter mm	Approx. Weight kg/km	Max DC Resistance at 20°C	Current rating Amp
SQ MM						
1 X 4.0	56/0.30	0.7	9.0	121.80	4.61	53
1 X 6.0	84/0.30	0.7	10.0	153.98	3.08	67
1 X 10.0	80/0.40	0.7	11.0	205.53	1.83	92
1 X 16.0	126/0.40	0.7	12.0	272.18	1.15	124
1 X 25.0	196/0.40	0.9	13.9	383.30	0.727	182
1 X 35.0	276/0.40	0.9	15.2	493.73	0.524	226
1 X 50.0	396/0.40	1	17.2	663.16	0.387	275
1 X 70.0	360/0.50	1.1	19.3	892.98	0.268	353
1 X 95.0	475/0.50	1.1	21.7	1140.46	0.193	430
1 X 120.0	608/0.580	1.2	23.6	1418.18	0.153	500
1 X 150.0	756/0.50	1.4	24.3	1703.76	0.124	577
1 X 185.0	925/0.50	1.6	26.8	2087.70	0.0991	661
1 X 240.0	1221/0.50	1.7	31.4	2703.79	0.0754	781
1 X 300.0	1525/0.50	1.8	34.4	3323.12	0.0601	902
1 X 400.0	2013/0.50	2	39.2	4358.73	0.0470	1085
1 X 500.0	1769/0.50	2.2	43.4	5447.10	0.0366	1253
1 X 630.0	2257/0.50	2.4	48.3	6864.78	0.0283	1454





TWO CORE CU COND. XLPE INSULATED & PVC SHEATHED CABLES ACCORDING TO IEC 60502

Core and Size	Stranding (Minimum No of strands)	Nominal Thickness of Insulation mm	Nominal Overall Diameter mm	Approx. Weight kg/km	Max DC Resistance at 20°C	Current rating Amp
SQ MM						
2 X 4.0	56/0.30	0.7	13.0	221.94	4.61	49
2 X 6.0	84/0.30	0.7	15.0	288.25	3.08	63
2 X 10.0	80/0.40	0.7	17.0	393.30	1.83	86
2 X 16.0	126/0.40	0.7	19.1	534.12	1.15	115
2 X 25.0	196/0.40	0.9	23.2	776.08	0.727	149
2 x 35.0	276/0.40	0.9	26.0	1013.38	0.524	185
2 x 50.0	396/0.40	1	30.2	1382.17	0.387	225
2 x 70.0	360/0.50	1.1	34.5	1864.82	0.268	289
2 x 95.0	475/0.50	1.1	39.2	2387.81	0.193	352
2 x 120.0	608/0.580	1.2	43.1	2968.72	0.153	410





THREE CORE CU COND. XLPE INSULATED & PVC SHEATHED CABLES ACCORDING TO IEC 60502

Core and Size SQ MM	Stranding (Minimum No of strands)	Nominal Thickness of Insulation mm	Nominal Overall Diameter mm	Approx. Weight kg/km	Max DC Resistance at 20°C	Current rating Amp
3 X 4.0	56/0.30	0.7	13.6	273.07	4.61	42
3 X 6.0	84/0.30	0.7	15.8	361.49	3.08	54
3 X 10.0	80/0.40	0.7	18.0	508.03	1.83	75
3 X 16.0	126/0.40	0.7	20.3	709.62	1.15	100
3 X 25.0	196/0.40	0.9	24.7	1046.71	0.727	127
3 X 35.0	276/0.40	0.9	27.7	1383.98	0.524	158
3 X 50.0	396/0.40	1	32.3	1906.88	0.387	192
3 X 70.0	360/0.50	1.1	37.0	2598.69	0.268	246
3 X 95.0	475/0.50	1.1	42.5	3396.94	0.193	298
3 X 120.0	608/0.580	1.2	46.6	4240.97	0.153	346
3 X 150.0	756/0.50	1.4	48.0	5101.75	0.124	399
3 X 185.0	925/0.50	1.6	54.0	6337.31	0.0991	456
3 X 240.0	1221/0.50	1.7	63.9	8238.96	0.0754	538





FOUR CORE CU COND. XLPE INSULATED & PVC SHEATHED CABLES ACCORDING TO IEC 60502

Core and Size	Stranding (Number of Strand/Strand Diameter)	Nominal Thickness of Insulation mm	Nominal Overall Diameter mm	Approx. Weight kg/km	Max DC Resistance at 20°C	Current rating Amp
SQ MM						
4 X 4.0	56/0.30	0.7	14.7	329.45	4.61	42
4 X 6.0	84/0.30	0.7	17.1	440.76	3.08	54
4 X 10.0	80/0.40	0.7	19.7	638.10	1.83	75
4 X 16.0	126/0.40	0.7	22.3	897.90	1.15	100
4 X 25.0	196/0.40	0.9	27.2	1335.13	0.727	127
4 X 35.0	276/0.40	0.9	30.6	1776.19	0.524	158
4 X 50.0	396/0.40	1	35.7	2459.71	0.387	192
4 X 70.0	360/0.50	1.1	41.3	3417.86	0.268	246
4 X 95.0	475/0.50	1.1	47.0	4404.50	0.193	298
4 X 120.0	608/0.580	1.2	52.1	5578.21	0.153	346
4 X 150.0	756/0.50	1.4	53.7	6722.79	0.124	399
4 X 185.0	925/0.50	1.6	59.9	8269.96	0.0991	456



UNARMoured CABLES

Rigid UnArmoured - Environment Friendly AI /ZHLS /ZHLS



RIGID CABLES

Rigid UnArmoured - Environment Friendly Al /ZHLS /ZHLS

Category: Rigid Cables

Sub Category: UnArmoured Cables 1.1 KV

Main Characteristics: Economical & Environment Friendly

Name: 1.1 KV Rigid Un Armoured Aluminium / ZHLS / ZHLS Cables, Part No. ZHLS

Approval: Generally Conforming to IEC 60502-Pt-1, BS: 6346

Construction:

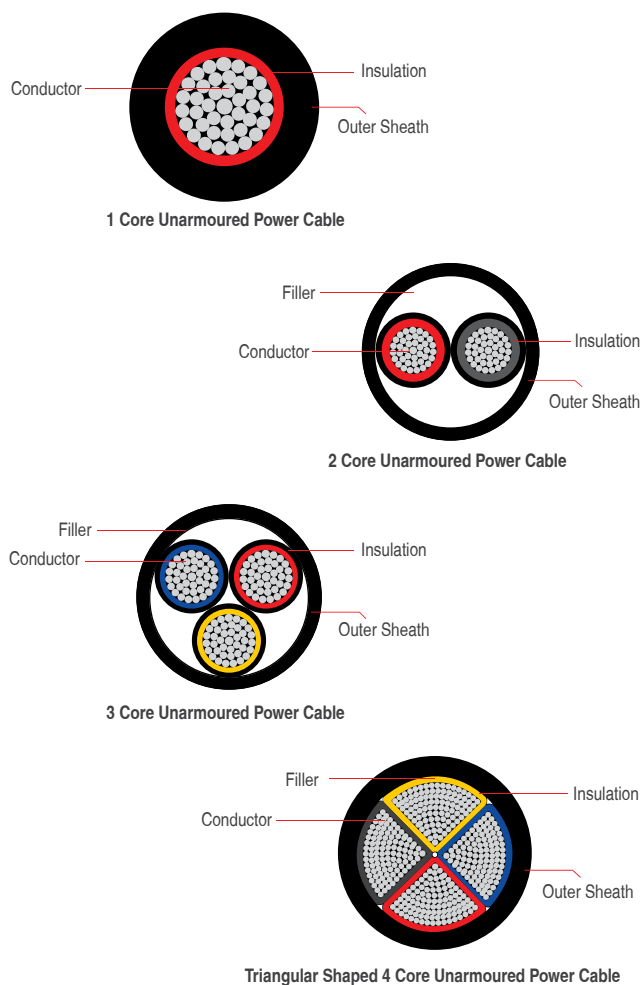
- **Class:** 2 Stranded Aluminium Wire as per BS 6360 / IEC 60228
- **Insulation:** ZHLS as per IEC 60502
- **Core Identification:**
 - 1 Core: **Black / Red / White**
 - 2 Core: **Red, Black**
 - 3 Core: **Red, Yellow, Blue**
 - 4 Core: **Red, Yellow, Blue & Black**
- **Inner Sheath:** ZHLS Grade as per IEC 60502
- **Outer Sheath:** ZHLS Grade as per IEC 60502

Product Feature:

- Light Weight
- Fire Safety
- Low Smoke and Non Toxic smoke on Combustion

Variant:

- FR • FRLS



Technical Data:

Insulation Resistance: 1×10^{14} Ohm-Cm

Conductor Class: Class - 2 IEC 60028 / IS: 8130/84

Bending Radius: 10 X OD (OD= Overall Diameter of Cable)

Voltage Rated: 0.6 / 1.0 Kv (1.2 Kv)

Test Voltage: 3500 Volts

Temperature Range: -10°C to +90°C

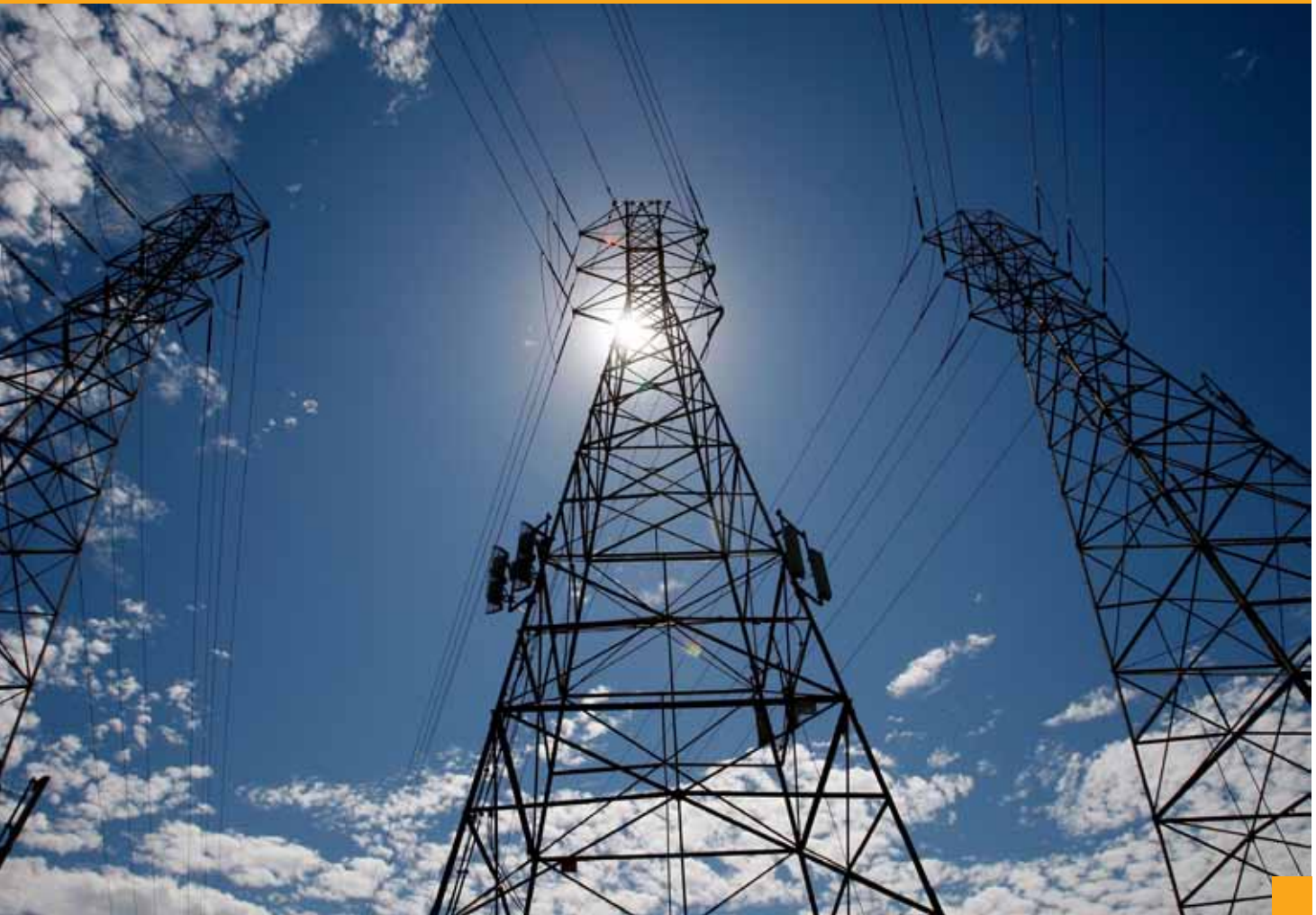
Short Circuiting Temp: 250°C



www.suncables.com

Application:

- General & Industrial Application Plant Wiring
- Over Group Cables
- Area where extra Health preclusions are required i.e. Public Places, Hospitals, AirPort, Rail etc.





**DIMENSIONAL TABLES, POWER CABLES – ALUMINIUM / ZHLS / ZHLS
SINGLE CORE AL COND. ZHLS INSULATED & ZHLS SHEATHED CABLES ACCORDING TO IEC 60502**

Core and Size	Stranding (Minimum No of strands)	Nominal Thickness of Insulation mm	Nominal Overall Diameter mm	Approx. Weight kg/km	Max DC Resistance at 20°C	Current rating Amp
SQ MM						
1 X 4.0	7	1	9.3	108.68	7.41	34
1 X 6.0	7	1	9.8	122.49	4.61	43
1 X 10.0	7	1	10.6	147.22	3.08	60
1 X 16.0	7	1	11.5	178.20	1.91	81
1 X 25.0	7	1.2	13.0	232.82	1.20	112
1 X 35.0	7	1.2	14.1	279.93	0.868	139
1 X 50.0	19	1.4	15.8	358.94	0.641	169
1 X 70.0	19	1.4	17.2	442.34	0.443	217
1 X 95.0	19	1.6	19.3	558.41	0.320	265
1 X 120.0	37	1.6	20.8	663.05	0.253	308
1 X 150.0	37	1.8	22.8	798.91	0.206	356
1 X 185.0	37	2	24.8	958.82	0.164	407
1 X 240.0	61	2.2	27.6	1199.81	0.125	482
1 X 300.0	61	2.4	30.1	1451.78	0.100	557
1 X 400.0	61	2.6	34.3	1880.36	0.0778	671
1 X 500.0	61	2.8	38.0	2309.18	0.0605	775
1 X 630.0	91	2.8	40.8	2787.12	0.0469	900





TWO CORE AL COND. ZHLS INSULATED & ZHLS SHEATHED CABLES ACCORDING TO IEC 60502

Core and Size SQ MM	Stranding (Minimum No of strands)	Nominal Thickness of Insulation mm	Nominal Overall Diameter mm	Approx. Weight kg/km	Max DC Resistance at 20°C	Current rating Amp
2 X 4.0	7	1	13.6	186.31	7.41	31
2 X 6.0	7	1	14.6	213.85	4.61	39
2 X 10.0	7	1	16.1	260.16	3.08	54
2 X 16.0	7	1	18.1	327.14	1.91	73
2 X 25.0	7	1.2	18.5	405.54	1.20	89
2 x 35.0	7	1.2	20.2	498.01	0.868	111
2 x 50.0	19	1.4	22.8	653.56	0.641	135
2 x 70.0	19	1.4	25.1	824.48	0.443	173
2 x 95.0	19	1.6	28.5	1052.35	0.320	210
2 x 120.0	37	1.6	30.7	1254.67	0.253	244





THREE CORE AL COND. ZHLS INSULATED & ZHLS SHEATHED CABLES ACCORDING TO IEC 60502

Core and Size	Stranding (Minimum No of strands)	Nominal Thickness of Insulation mm	Nominal Overall Diameter mm	Approx. Weight kg/km	Max DC Resistance at 20°C	Current rating Amp
SQ MM						
3 X 4.0	7	1	14.3	219.69	7.41	26
3 X 6.0	7	1	15.4	255.80	4.61	33
3 X 10.0	7	1	17.1	320.86	3.08	46
3 X 16.0	7	1	19.2	410.46	1.91	61
3 X 25.0	7	1.2	21.2	549.01	1.20	78
3 X 35.0	7	1.2	23.3	682.62	0.868	96
3 X 50.0	19	1.4	26.9	915.16	0.641	117
3 X 70.0	19	1.4	29.9	1166.45	0.443	150
3 X 95.0	19	1.6	34.4	1531.82	0.320	183
3 X 120.0	37	1.6	37.2	1835.07	0.253	212
3 X 150.0	37	1.8	41.1	2235.32	0.206	245
3 X 185.0	37	2	45.6	2753.89	0.164	280
3 X 240.0	61	2.2	50.9	3466.50	0.125	330





FOUR CORE AL COND. ZHLS INSULATED & ZHLS SHEATHED CABLES ACCORDING TO IEC 60502

Core and Size	Stranding (Number of Strand/Strand Diameter)	Nominal Thickness of Insulation mm	Nominal Overall Diameter mm	Approx. Weight kg/km	Max DC Resistance at 20°C	Current rating Amp
SQ MM						
4 X 4.0	7	1	16.0	281.65	7.41	26
4 X 6.0	7	1	17.2	328.76	4.61	33
4 X 10.0	7	1	19.2	414.59	3.08	46
4 X 16.0	7	1	21.3	523.85	1.91	61
4 X 25.0	7	1.2	25.0	712.60	1.20	78
4 X 35.0	7	1.2	27.6	891.93	0.868	96
4 X 50.0	19	1.4	32.5	1235.92	0.641	117
4 X 70.0	19	1.4	36.3	1577.98	0.443	150
4 X 95.0	19	1.6	41.3	2025.43	0.320	183
4 X 120.0	37	1.6	45.3	2480.90	0.253	212
4 X 150.0	37	1.8	50.1	3023.12	0.206	245
4 X 185.0	37	2	55.1	3661.46	0.164	280



UNARMoured CABLES

Rigid UnArmoured - Environment Friendly Cu /ZHLS /ZHLS



RIGID CABLES

Rigid UnArmoured - Environment Friendly Cu /ZHLS /ZHLS

Category: Rigid Cables

Sub Category: UnArmoured Cables 1.1 KV

Main Characteristics: Space Saving & Environment Friendly

Name: 1.1 KV Rigid Un Armoured Copper / ZHLS / ZHLS Cables, Part No.

Approval: Generally Conforming to IS 1554, IEC 60502, BS 6724

Construction:

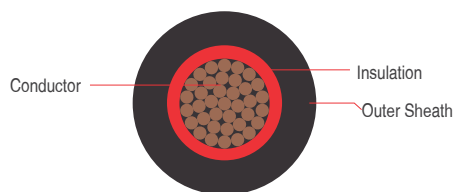
- **Class:** 2 Stranded Copper Wire as per BS 6360 / IEC 60228
- **Insulation:** ZHLS as per IEC 60502
- **Core Identification:**
 - 1 Core: **Black / Red / White**
 - 2 Core: **Red, Black**
 - 3 Core: **Red, Yellow, Blue**
 - 4 Core: **Red, Yellow, Blue & Black**
- **Inner Sheath:** ZHLS Grade as per IEC 60502
- **Outer Sheath:** ZHLS Grade as per IEC 60502

Product Feature:

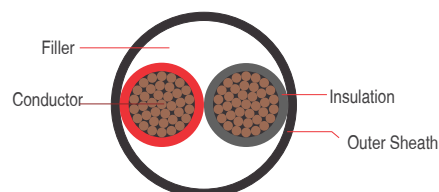
- Space Saving
- Fire Safety
- Low Smoke and Non Toxic smoke on Combustion

Variant:

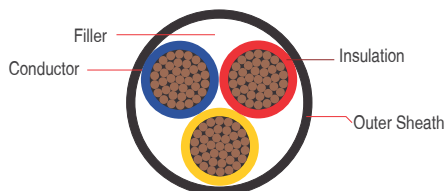
- FR • FRLS



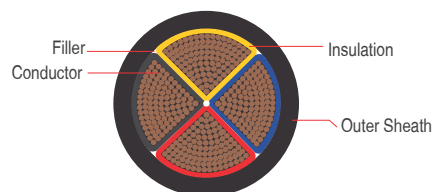
1 Core Unarmoured Power Cable



2 Core Unarmoured Power Cable



3 Core Unarmoured Power Cable



Sector shaped 4 Unarmoured Power Cable

Technical Data:

Insulation Resistance: 1×10^{14} Ohm-Cm

Conductor Class: Class - 2 IEC 60028 / IS: 8130/84

Bending Radius: 8 X OD (OD= Overall Diameter of Cable)

Voltage Rated: 0.6 / 1.0 Kv (1.2 Kv)

Test Voltage: 3500 Volts

Temperature Range: -15°C to +90°C

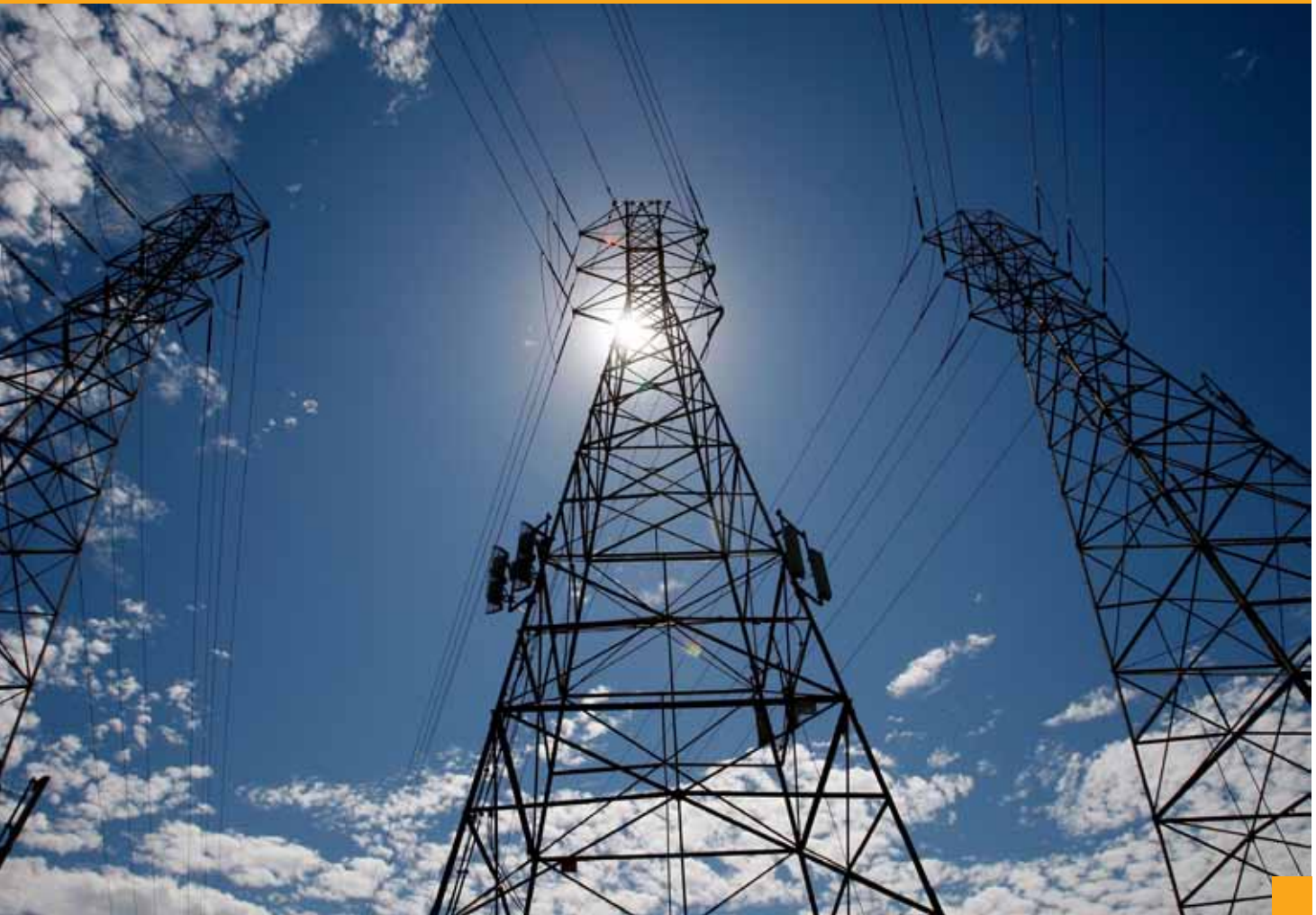
Short Circuiting Temp: 250°C



www.suncables.com

Application:

- General & Industrial Application Plant Wiring
- Over Group Cables
- Area where extra Health preclusions are required i.e. Public Places, Hospitals, AirPort, Rail etc.





**DIMENSIONAL TABLES, POWER CABLES – COPPER / PVC / PVC
SINGLE CORE CU COND. PVC INSULATED & PVC SHEATHED CABLES ACCORDING TO IEC 60502**

Core and Size	Stranding (Minimum No of strands)	Nominal Thickness of Insulation mm	Nominal Overall Diameter mm	Approx. Weight kg/km	Max DC Resistance at 20°C	Current rating Amp
SQ MM						
1 X 4.0	7	1	9.3	133.66	4.61	43
1 X 6.0	7	1	9.8	159.97	3.08	55
1 X 10.0	7	1	10.6	210.66	1.83	76
1 X 16.0	7	1	11.5	278.13	1.15	102
1 X 25.0	7	1.2	13.0	388.25	0.727	146
1 X 35.0	7	1.2	14.1	498.81	0.524	181
1 X 50.0	19	1.4	15.8	672.99	0.387	219
1 X 70.0	19	1.4	17.2	888.42	0.268	281
1 X 95.0	19	1.6	19.3	1146.99	0.193	341
1 X 120.0	37	1.6	20.8	1416.44	0.153	396
1 X 150.0	37	1.8	22.8	1735.68	0.124	456
1 X 185.0	37	2	24.8	2118.63	0.0991	521
1 X 240.0	61	2.2	27.6	2712.77	0.0754	615
1 X 300.0	61	2.4	30.1	3341.43	0.0601	709
1 X 400.0	61	2.6	34.3	4374.69	0.0470	852
1 X 500.0	61	2.8	38.0	5465.65	0.0366	982
1 X 630.0	91	2.8	40.8	6814.34	0.0283	1138





TWO CORE CU COND PVC INSULATED & PVC SHEATHED CABLES ACCORDING TO IEC 60502

Core and Size SQ MM	Stranding (Minimum No of strands)	Nominal Thickness of Insulation mm	Nominal Overall Diameter mm	Approx. Weight kg/km	Max DC Resistance at 20°C	Current rating Amp
2 X 4.0	7	1	13.6	236.28	4.61	40
2 X 6.0	7	1	14.6	288.80	3.08	51
2 X 10.0	7	1	16.1	387.05	1.83	70
2 X 16.0	7	1	18.1	526.99	1.15	94
2 X 25.0	7	1.2	18.5	716.41	0.727	119
2 x 35.0	7	1.2	20.2	935.76	0.524	148
2 x 50.0	19	1.4	22.8	1281.64	0.387	180
2 x 70.0	19	1.4	25.1	1716.64	0.268	232
2 x 95.0	19	1.6	28.5	2229.51	0.193	282
2 x 120.0	37	1.6	30.7	2761.43	0.153	328





THREE CORE CU COND PVC INSULATED & PVC SHEATHED CABLES ACCORDING TO IEC 60502

Core and Size	Stranding (Minimum No of strands)	Nominal Thickness of Insulation mm	Nominal Overall Diameter mm	Approx. Weight kg/km	Max DC Resistance at 20°C	Current rating Amp
SQ MM						
3 X 4.0	7	1	14.3	294.63	4.61	34
3 X 6.0	7	1	15.4	368.21	3.08	43
3 X 10.0	7	1	17.1	511.19	1.83	60
3 X 16.0	7	1	19.2	710.22	1.15	80
3 X 25.0	7	1.2	21.2	1015.31	0.727	101
3 X 35.0	7	1.2	23.3	1339.25	0.524	126
3 X 50.0	19	1.4	26.9	1857.29	0.387	153
3 X 70.0	19	1.4	29.9	2504.69	0.268	196
3 X 95.0	19	1.6	34.4	3297.55	0.193	238
3 X 120.0	37	1.6	37.2	4095.21	0.153	276
3 X 150.0	37	1.8	41.1	5045.63	0.124	319
3 X 185.0	37	2	45.6	6233.32	0.0991	364
3 X 240.0	61	2.2	50.9	8005.38	0.0754	430





FOUR CORE PVC CU COND INSULATED & PVC SHEATHED CABLES ACCORDING TO IEC 60502

Core and Size SQ MM	Stranding (Number of Strand/Strand Diameter)	Nominal Thickness of Insulation mm	Nominal Overall Diameter mm	Approx. Weight kg/km	Max DC Resistance at 20°C	Current rating Amp
4 X 4.0	7	1	15.4	358.64	4.61	34
4 X 6.0	7	1	16.6	452.05	3.08	43
4 X 10.0	7	1	18.6	644.85	1.83	60
4 X 16.0	7	1	21.0	905.06	1.15	80
4 X 25.0	7	1.2	25.0	1334.33	0.727	101
4 X 35.0	7	1.2	27.6	1767.43	0.524	126
4 X 50.0	19	1.4	32.5	2492.08	0.387	153
4 X 70.0	19	1.4	36.3	3362.30	0.268	196
4 X 95.0	19	1.6	41.3	4379.75	0.193	238
4 X 120.0	37	1.6	45.3	5494.42	0.153	276
4 X 150.0	37	1.8	50.1	6770.20	0.124	319
4 X 185.0	37	2	55.1	8300.70	0.0991	364



UNARMoured CABLES

Rigid UnArmoured - Environment Friendly Cu /EPR /LFH



RIGID CABLES

Rigid UnArmoured - Environment Friendly Cu /EPR /LFH

Category: Rigid Cables

Sub Category: UnArmoured Cables 1.1 KV

Main Characteristics: High Performance & High Performance

Name: 1.1 KV Rigid Un Armoured Copper / EPR/ LFH

Part No. RR - LSOH

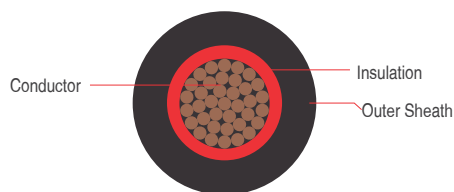
Approval: NES 526, IEC 60502

Construction:

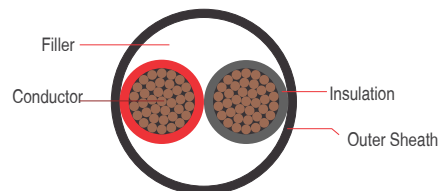
- **Class:** 2 Stranded Tinned Copper Wire as per BS 6360 / IEC 60228
- **Separator Tape:** Tinned Plastic Tape
- **Insulation:** EPR as per IEC 60502 / NES 726
- **Core Identification:**
 - 1 Core: **Red / Black / Natural**
 - 2 Core: **Red, Black**
 - 3 Core: **Red, Yellow, Blue**
 - 4 Core: **Red, Yellow , Blue & Green**
- **Inner Sheath:** LFH Grade as per NES - 518
- **Outer Sheath:** LFH Grade as per IS NES 518

Product Feature:

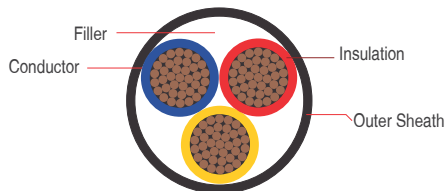
- Space Saving
- Very good Insulation Properties
- Long Life
- High Temperature Tolerance upto 105 Degree
- Low bend Radius
- Good Fire Properties
- Oil & Chemical Resistance
- Good Weathering Properties



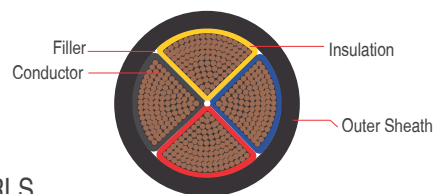
1 Core Unarmoured Power Cable



2 Core Unarmoured Power Cable



3 Core Unarmoured Power Cable



Sector shaped 4 Unarmoured Power Cable

Variant:

- FR
- FRLS

Technical Data:

Insulation Resistance: 3670 Mega – Ohm-Km

Conductor Class: Class - 2 to IEC 60228

Bending Radius: 08 X OD (OD= Overall Diameter of Cable)

Voltage Rated: 0.6 / 1.0 Kv

Test Voltage: 3500 Volts

Temperature Range: -25°C to +90°C

Short Circuiting Temp: 250°C



www.suncables.com

Application:

- General & Industrial Application Plant Wiring
- Over Group Cables
- For Very High Life Expectancy
- Near Furnaces or any other High Temperature Area
- Where Low Bending is required
- Area with good Oil and Chemical Resistance
- Area where extra Health precautions are required i.e. Public Places, Hospitals, AirPort, Rail etc.





**DIMENSIONAL TABLES, POWER FLEXIBLE CABLES – COPPER / EPR / LFH
SINGLE CORE CU COND. EPR INSULATED & HALOGEN FREE LFH SHEATHED CABLES ACCORDING TO IEC 60502**

Core and Size SQ MM	Stranding (Minimum No of strands)	Nominal Thickness of Insulation mm	Nominal Overall Diameter mm	Approx. Weight kg/km	Max DC Resistance at 20°C	Current rating Amp
1 X 4.0	7	1	9.3	141.09	4.70	53
1 X 6.0	7	1	9.8	168.08	3.11	67
1 X 10.0	7	1	10.6	219.86	1.84	92
1 X 16.0	7	1	11.5	288.56	1.16	124
1 X 25.0	7	1.2	13.0	400.62	0.734	182
1 X 35.0	7	1.2	14.1	512.66	0.529	226
1 X 50.0	19	1.4	15.7	684.99	0.391	275
1 X 70.0	19	1.4	17.2	906.27	0.270	353
1 X 95.0	19	1.6	19.3	1167.28	0.195	430
1 X 120.0	37	1.6	20.8	1438.56	0.154	500
1 X 150.0	37	1.8	22.8	1759.90	0.126	577
1 X 185.0	37	2	24.8	2145.01	0.100	661
1 X 240.0	61	2.2	27.6	2742.12	0.0762	781
1 X 300.0	61	2.4	30.1	3373.41	0.0607	902
1 X 400.0	61	2.6	34.3	4419.33	0.0475	1085
1 X 500.0	61	2.8	38.0	5514.93	0.0369	1253
1 X 630.0	91	2.8	40.8	6867.64	0.0286	1454





TWO CORE CU COND. EPR INSULATED & HALOGEN FREE LFH SHEATHED CABLES ACCORDING TO IEC 60502

Core and Size SQ MM	Stranding (Minimum No of strands)	Nominal Thickness of Insulation mm	Nominal Overall Diameter mm	Approx. Weight kg/km	Max DC Resistance at 20°C	Current rating Amp
2 X 4.0	7	1	13.6	250.29	4.70	49
2 X 6.0	7	1	14.6	304.27	3.11	63
2 X 10.0	7	1	16.2	407.85	1.84	86
2 X 16.0	7	1	18.1	547.43	1.16	115
2 X 25.0	7	1.2	21.3	782.74	0.734	149
2 x 35.0	7	1.2	23.6	1017.02	0.529	185
2 x 50.0	19	1.4	27.3	1388.79	0.391	225
2 x 70.0	19	1.4	30.2	1842.70	0.270	289
2 x 95.0	19	1.6	34.5	2383.35	0.195	352
2 x 120.0	37	1.6	37.5	2940.62	0.154	410





THREE CORE CU COND. EPR INSULATED & HALOGEN FREE LFH SHEATHED CABLES ACCORDING TO IEC 60502

Core and Size SQ MM	Stranding (Minimum No of strands)	Nominal Thickness of Insulation mm	Nominal Overall Diameter mm	Approx. Weight kg/km	Max DC Resistance at 20°C	Current rating Amp
3 X 4.0	7	1	14.3	310.28	4.70	42
3 X 6.0	7	1	15.4	385.52	3.11	54
3 X 10.0	7	1	17.1	531.73	1.84	75
3 X 16.0	7	1	19.2	733.22	1.16	100
3 X 25.0	7	1.2	22.6	1065.64	0.734	127
3 X 35.0	7	1.2	25.2	1401.33	0.529	158
3 X 50.0	19	1.4	29.1	1933.55	0.391	192
3 X 70.0	19	1.4	32.3	2592.45	0.270	246
3 X 95.0	19	1.6	37.4	3418.75	0.195	298
3 X 120.0	37	1.6	40.6	4234.70	0.154	346
3 X 150.0	37	1.8	44.8	5203.12	0.126	399
3 X 185.0	37	2	49.6	6429.52	0.100	456
3 X 240.0	61	2.2	55.6	8241.38	0.0762	538





FOUR CORE CU COND. EPR INSULATED & HALOGEN FREE LFH SHEATHED CABLES ACCORDING TO IEC 60502

Core and Size SQ MM	Stranding (Number of Strand/Strand Diameter)	Nominal Thickness of Insulation mm	Nominal Overall Diameter mm	Approx. Weight kg/km	Max DC Resistance at 20°C	Current rating Amp
4 X 4.0	7	1	15.4	376.12	4.70	42
4 X 6.0	7	1	16.6	471.42	3.11	54
4 X 10.0	7	1	18.6	667.25	1.84	75
4 X 16.0	7	1	21.0	930.87	1.16	100
4 X 25.0	7	1.2	24.9	1364.26	0.734	127
4 X 35.0	7	1.2	27.7	1804.45	0.529	158
4 X 50.0	19	1.4	32.1	2502.33	0.391	192
4 X 70.0	19	1.4	36.2	3417.61	0.270	246
4 X 95.0	19	1.6	41.3	4447.07	0.195	298
4 X 120.0	37	1.6	45.4	5582.38	0.154	346
4 X 150.0	37	1.8	50.1	6864.62	0.126	399
4 X 185.0	37	2	55.0	8404.05	0.100	456



UNARMoured CABLES

Rigid UnArmoured - Environment Friendly Cu /EPR /LFH



RIGID CABLES

Rigid UnArmoured - Environment Friendly Cu /EPR /LFH

Category: Rigid Cables

Sub Category: UnArmoured Cables 1.1 KV

Main Characteristics: High Performance & High Performance

Name: 1.1 KV Rigid Un Armoured Copper / EPR/ LFH

Part No. RR - LSOH

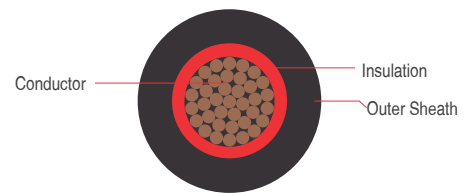
Approval: IEC 60502, BS: 6724

Construction:

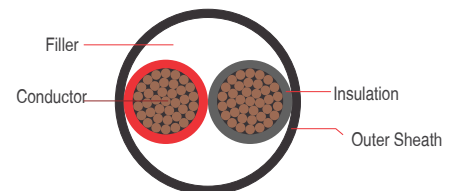
- **Class:** 2 Stranded Tinned Copper Wire as per BS 6360
- **Separator Tape:** Plastic Tape
- **Insulation:** EPR as per IEC 60502
- **Core Identification:**
 - 1 Core: **Red / Black / Natural**
 - 2 Core: **Red, Black**
 - 3 Core: **Red, Yellow, Blue**
 - 4 Core: **Red, Yellow , Blue & Green**
- **Inner Sheath:** CR Grade as per IS: 6380/1984
- **Outer Sheath:** CR Grade as per IS : 6380/1984

Product Feature:

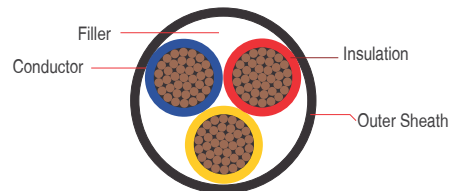
- Space Saving
- Very good Insulation Properties
- Long Life
- High Temperature Tolerance upto 105 Degree
- Low bend Radius
- Good Fire Properties
- Good Weathering Properties



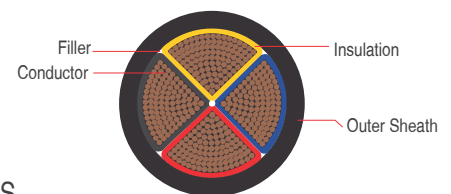
1 Core Unarmoured Power Cable



2 Core Unarmoured Power Cable



3 Core Unarmoured Power Cable



Sector shaped 4 Unarmoured Power Cable

Variant:

- FR • FRLS

Technical Data:

Insulation Resistance: 3670 Mega – Ohm-Km

Conductor Class: Class - 2 to IEC 60228

Bending Radius: 08 X OD (OD= Overall Diameter of Cable)

Voltage Rated: 0.6 / 1.0 Kv

Test Voltage: 3500 Volts

Temperature Range: -25°C to +90°C

Short Circuiting Temp: 250°C



Application:

- General & Industrial Application Plant Wiring
- Over Group Cables
- For Very High Life Expectancy
- Near Furnaces or any other High Temperature Area
- Where Low Bending is required
- Area with good Oil and Chemical Resistance
- Area where extra Health precautions are required i.e. Public Places, Hospitals, AirPort, Rail etc.





**DIMENSIONAL TABLES, POWER FLEXIBLE CABLES – COPPER / EPR / CR
SINGLE CORE CU COND. EPR INSULATED & CR SHEATHED CABLES ACCORDING TO IEC 60502**

Core and Size	Stranding (Minimum No of strands)	Nominal Thickness of Insulation mm	Nominal Overall Diameter mm	Approx. Weight kg/km	Max DC Resistance at 20°C	Current rating Amp
SQ MM						
1 X 4.0	7	1	9.3	141.09	4.70	53
1 X 6.0	7	1	9.8	168.08	3.11	67
1 X 10.0	7	1	10.6	219.86	1.84	92
1 X 16.0	7	1	11.5	288.56	1.16	124
1 X 25.0	7	1.2	13.0	400.62	0.734	182
1 X 35.0	7	1.2	14.1	512.66	0.529	226
1 X 50.0	19	1.4	15.7	684.99	0.391	275
1 X 70.0	19	1.4	17.2	906.27	0.270	353
1 X 95.0	19	1.6	19.3	1167.28	0.195	430
1 X 120.0	37	1.6	20.8	1438.56	0.154	500
1 X 150.0	37	1.8	22.8	1759.90	0.126	577
1 X 185.0	37	2	24.8	2145.01	0.100	661
1 X 240.0	61	2.2	27.6	2742.12	0.0762	781
1 X 300.0	61	2.4	30.1	3373.41	0.0607	902
1 X 400.0	61	2.6	34.3	4419.33	0.0475	1085
1 X 500.0	61	2.8	38.0	5514.93	0.0369	1253
1 X 630.0	91	2.8	40.8	6867.64	0.0286	1454





TWO CORE CU COND. EPR INSULATED & CR SHEATHED CABLES ACCORDING TO IEC 60502

Core and Size SQ MM	Stranding (Minimum No of strands)	Nominal Thickness of Insulation mm	Nominal Overall Diameter mm	Approx. Weight kg/km	Max DC Resistance at 20°C	Current rating Amp
2 X 4.0	7	1	13.6	250.29	4.70	49
2 X 6.0	7	1	14.6	304.27	3.11	63
2 X 10.0	7	1	16.2	407.85	1.84	86
2 X 16.0	7	1	18.1	547.43	1.16	115
2 X 25.0	7	1.2	21.3	782.74	0.734	149
2 x 35.0	7	1.2	23.6	1017.02	0.529	185
2 x 50.0	19	1.4	27.3	1388.79	0.391	225
2 x 70.0	19	1.4	30.2	1842.70	0.270	289
2 x 95.0	19	1.6	34.5	2383.35	0.195	352
2 x 120.0	37	1.6	37.5	2940.62	0.154	410





THREE CORE CU COND. EPR INSULATED & CR SHEATHED CABLES ACCORDING TO IEC 60502

Core and Size	Stranding (Minimum No of strands)	Nominal Thickness of Insulation mm	Nominal Overall Diameter mm	Approx. Weight kg/km	Max DC Resistance at 20°C	Current rating Amp
SQ MM						
3 X 4.0	7	1	14.3	310.28	4.70	42
3 X 6.0	7	1	15.4	385.52	3.11	54
3 X 10.0	7	1	17.1	531.73	1.84	75
3 X 16.0	7	1	19.2	733.22	1.16	100
3 X 25.0	7	1.2	22.6	1065.64	0.734	127
3 X 35.0	7	1.2	25.2	1401.33	0.529	158
3 X 50.0	19	1.4	29.1	1933.55	0.391	192
3 X 70.0	19	1.4	32.3	2592.45	0.270	246
3 X 95.0	19	1.6	37.4	3418.75	0.195	298
3 X 120.0	37	1.6	40.6	4234.70	0.154	346
3 X 150.0	37	1.8	44.8	5203.12	0.126	399
3 X 185.0	37	2	49.6	6429.52	0.100	456
3 X 240.0	61	2.2	55.6	8241.38	0.0762	538





FOUR CORE CU COND. EPR INSULATED & CR SHEATHED CABLES ACCORDING TO IEC 60502

Core and Size SQ MM	Stranding (Number of Strand/Strand Diameter)	Nominal Thickness of Insulation mm	Nominal Overall Diameter mm	Approx. Weight kg/km	Max DC Resistance at 20°C	Current rating Amp
4 X 4.0	7	1	15.4	376.12	4.70	42
4 X 6.0	7	1	16.6	471.42	3.11	54
4 X 10.0	7	1	18.6	667.25	1.84	75
4 X 16.0	7	1	21.0	930.87	1.16	100
4 X 25.0	7	1.2	24.9	1364.26	0.734	127
4 X 35.0	7	1.2	27.7	1804.45	0.529	158
4 X 50.0	19	1.4	32.1	2502.33	0.391	192
4 X 70.0	19	1.4	36.2	3417.61	0.270	246
4 X 95.0	19	1.6	41.3	4447.07	0.195	298
4 X 120.0	37	1.6	45.4	5582.38	0.154	346
4 X 150.0	37	1.8	50.1	6864.62	0.126	399
4 X 185.0	37	2	55.0	8404.05	0.100	456



UNARMoured CABLES

Rigid UnArmoured - High Performance Cu /EPR /HOFR



RIGID CABLES

Rigid UnArmoured - High Performance Cu /EPR /HOFR

Category: Rigid Cables

Sub Category: UnArmoured Cables 1.1 KV

Main Characteristics: Space Saving & High Performance

Name: 1.1 KV Rigid Un Armoured Copper / EPR/ HOFR

Part No. H07RN-F

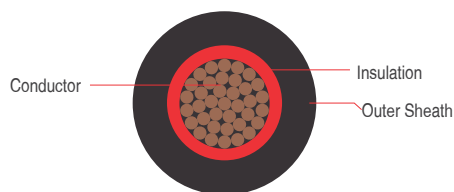
Approval: IEC 60502, BS: 6724

Construction:

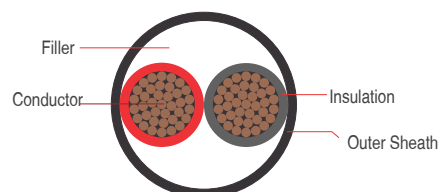
- **Class:** 2 Stranded Tinned Copper Wire as per BS 6360
- **Separator Tape :** Plastic Tape
- **Insulation:** EPR as per IS 6380/1984 / BS: 7655
- **Core Identification:**
 - 1 Core: **Red / Black / Natural**
 - 2 Core: **Red, Black**
 - 3 Core: **Red, Yellow, Blue**
 - 4 Core: **Red, Yellow , Blue & Green**
- **Inner Sheath:** HOFR Grade as per IEC 60502 / BS: 7655
- **Outer Sheath:** HOFR Grade as per IEC 60502/ BS: 7655

Product Feature:

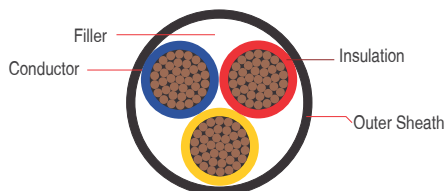
- Space Saving
- Very good Insulation Properties
- Long Life
- High Temperature Tolerance upto 90 Degree
- Low bend Radius
- Good Fire Properties
- Oil Resistance
- High Aberration
- Good Weathering Properties



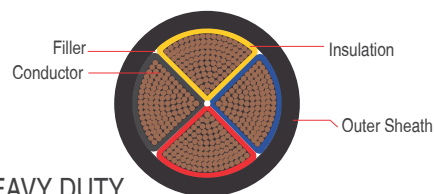
1 Core Unarmoured Power Cable



2 Core Unarmoured Power Cable



3 Core Unarmoured Power Cable



Sector shaped 4 Unarmoured Power Cable

Variant:

- FR
- HEAVY DUTY

Technical Data:

Insulation Resistance: 3670 Mega - Ohm-Km

Conductor Class: Class- 2 to IEC 60228

Bending Radius: 08 X OD (OD= Overall Diameter of Cable)

Voltage Rated: 0.6 / 1.0 Kv

Test Voltage: 3500 Volts

Temperature Range: -25°C to +90°C

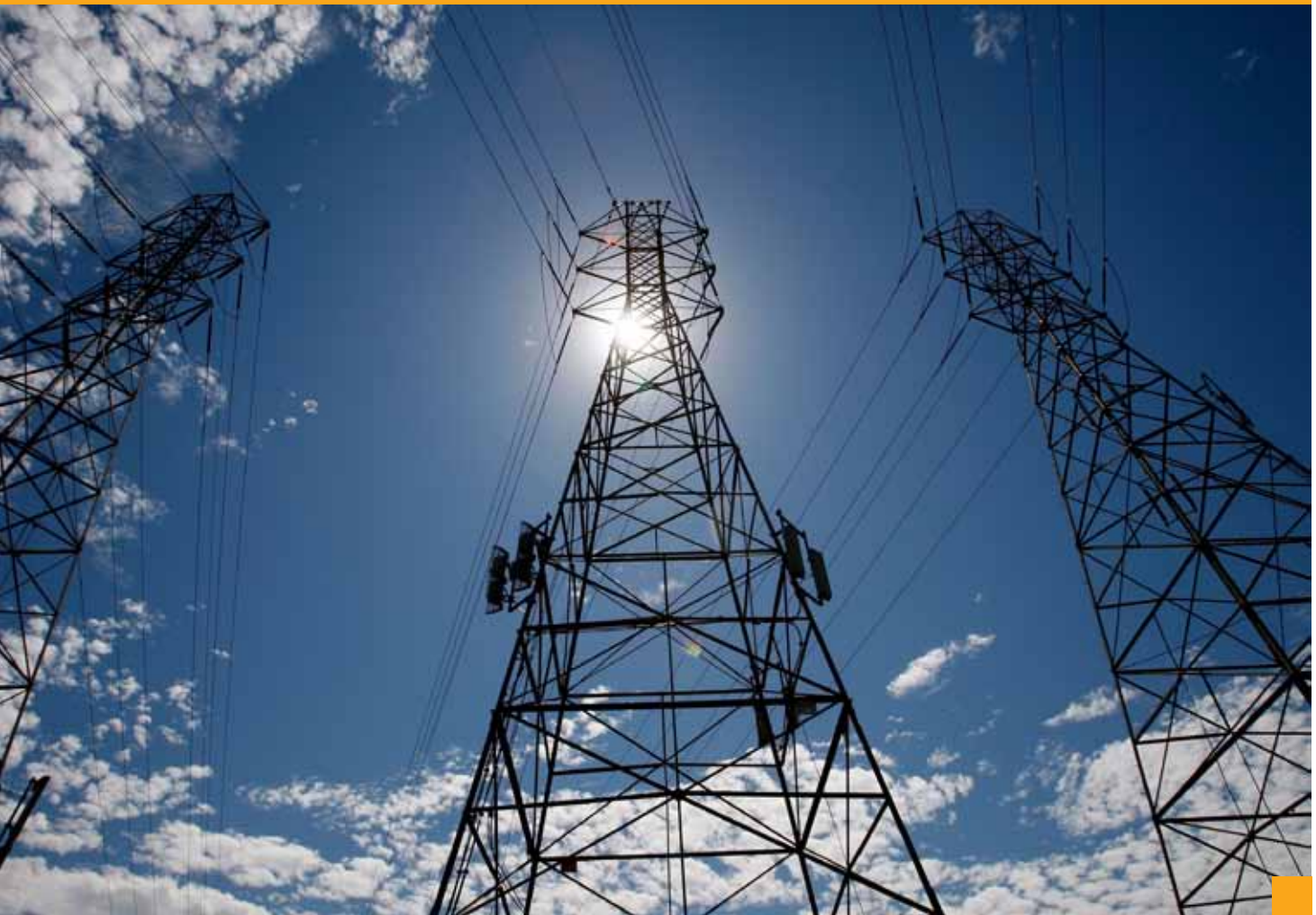
Short Circuiting Temp: 250°C



www.suncables.com

Application:

- General & Industrial Application Plant Wiring
- Over Group Cables
- For Very High Life Expectancy
- Near Furnaces or any other High Temperature Area
- Where Low Bending is required
- Area with good Oil and Chemical Resistance





**DIMENSIONAL TABLES, POWER FLEXIBLE CABLES – COPPER / EPR / HOFR
SINGLE CORE CU COND. EPR INSULATED & HOFR SHEATHED CABLES ACCORDING TO IEC 60502**

Core and Size	Stranding (Minimum No of strands)	Nominal Thickness of Insulation mm	Nominal Overall Diameter mm	Approx. Weight kg/km	Max DC Resistance at 20°C	Current rating Amp
SQ MM						
1 X 4.0	7	1	9.3	141.09	4.70	53
1 X 6.0	7	1	9.8	168.08	3.11	67
1 X 10.0	7	1	10.6	219.86	1.84	92
1 X 16.0	7	1	11.5	288.56	1.16	124
1 X 25.0	7	1.2	13.0	400.62	0.734	182
1 X 35.0	7	1.2	14.1	512.66	0.529	226
1 X 50.0	19	1.4	15.7	684.99	0.391	275
1 X 70.0	19	1.4	17.2	906.27	0.270	353
1 X 95.0	19	1.6	19.3	1167.28	0.195	430
1 X 120.0	37	1.6	20.8	1438.56	0.154	500
1 X 150.0	37	1.8	22.8	1759.90	0.126	577
1 X 185.0	37	2	24.8	2145.01	0.100	661
1 X 240.0	61	2.2	27.6	2742.12	0.0762	781
1 X 300.0	61	2.4	30.1	3373.41	0.0607	902
1 X 400.0	61	2.6	34.3	4419.33	0.0475	1085
1 X 500.0	61	2.8	38.0	5514.93	0.0369	1253
1 X 630.0	91	2.8	40.8	6867.64	0.0286	1454





TWO CORE CU COND. EPR INSULATED & HOFR SHEATHED CABLES ACCORDING TO IEC 60502

Core and Size	Stranding (Minimum No of strands)	Nominal Thickness of Insulation mm	Nominal Overall Diameter mm	Approx. Weight kg/km	Max DC Resistance at 20°C	Current rating Amp
SQ MM						
2 X 4.0	7	1	13.6	250.29	4.70	49
2 X 6.0	7	1	14.6	304.27	3.11	63
2 X 10.0	7	1	16.2	407.85	1.84	86
2 X 16.0	7	1	18.1	547.43	1.16	115
2 X 25.0	7	1.2	21.3	782.74	0.734	149
2 x 35.0	7	1.2	23.6	1017.02	0.529	185
2 x 50.0	19	1.4	27.3	1388.79	0.391	225
2 x 70.0	19	1.4	30.2	1842.70	0.270	289
2 x 95.0	19	1.6	34.5	2383.35	0.195	352
2 x 120.0	37	1.6	37.5	2940.62	0.154	410





THREE CORE CU COND. EPR INSULATED & HOFR SHEATHED CABLES ACCORDING TO IEC 60502

Core and Size SQ MM	Stranding (Minimum No of strands)	Nominal Thickness of Insulation mm	Nominal Overall Diameter mm	Approx. Weight kg/km	Max DC Resistance at 20°C	Current rating Amp
3 X 4.0	7	1	14.3	310.28	4.70	42
3 X 6.0	7	1	15.4	385.52	3.11	54
3 X 10.0	7	1	17.1	531.73	1.84	75
3 X 16.0	7	1	19.2	733.22	1.16	100
3 X 25.0	7	1.2	22.6	1065.64	0.734	127
3 X 35.0	7	1.2	25.2	1401.33	0.529	158
3 X 50.0	19	1.4	29.1	1933.55	0.391	192
3 X 70.0	19	1.4	32.3	2592.45	0.270	246
3 X 95.0	19	1.6	37.4	3418.75	0.195	298
3 X 120.0	37	1.6	40.6	4234.70	0.154	346
3 X 150.0	37	1.8	44.8	5203.12	0.126	399
3 X 185.0	37	2	49.6	6429.52	0.100	456
3 X 240.0	61	2.2	55.6	8241.38	0.0762	538





FOUR CORE CU COND. EPR INSULATED & HOFR SHEATHED CABLES ACCORDING TO IEC 60502

Core and Size	Stranding (Number of Strand/Strand Diameter)	Nominal Thickness of Insulation mm	Nominal Overall Diameter mm	Approx. Weight kg/km	Max DC Resistance at 20°C	Current rating Amp
SQ MM						
4 X 4.0	7	1	15.4	376.12	4.70	42
4 X 6.0	7	1	16.6	471.42	3.11	54
4 X 10.0	7	1	18.6	667.25	1.84	75
4 X 16.0	7	1	21.0	930.87	1.16	100
4 X 25.0	7	1.2	24.9	1364.26	0.734	127
4 X 35.0	7	1.2	27.7	1804.45	0.529	158
4 X 50.0	19	1.4	32.1	2502.33	0.391	192
4 X 70.0	19	1.4	36.2	3417.61	0.270	246
4 X 95.0	19	1.6	41.3	4447.07	0.195	298
4 X 120.0	37	1.6	45.4	5582.38	0.154	346
4 X 150.0	37	1.8	50.1	6864.62	0.126	399
4 X 185.0	37	2	55.0	8404.05	0.100	456



UNARMoured CABLES

Rigid UnArmoured - High Performance Aluminium /EPR /CR



RIGID CABLES

Rigid UnArmoured - High Performance Aluminium /EPR /CR

Category: Rigid Cables

Sub Category: UnArmoured Cables 1.1 KV

Main Characteristics: Economical & High Performance

Name: 1.1 KV Rigid Un Armoured Aluminium / EPR / CR

Part No. H07BN4-F- AL

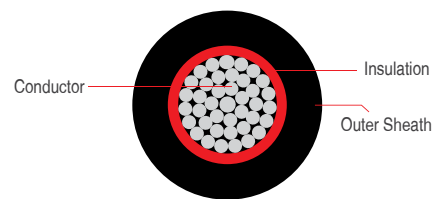
Approval: Generally Conforming IEC 60502, BS: 6724

Construction:

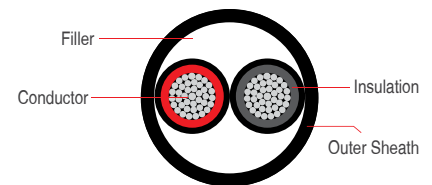
- **Class:** 2 Stranded Aluminium Wire as per BS 6360
- **Separator Tape :** Plastic Tape
- **Insulation:** EPR as per BS: 7655
- **Core Identification:**
 - 1 Core: **Red / Black / Natural**
 - 2 Core: **Red, Black**
 - 3 Core: **Red, Yellow, Blue**
 - 4 Core: **Red, Yellow , Blue & Green**
- **Inner Sheath:** CR Grade as per IEC 60502/ BS: 7655
- **Outer Sheath:** CR Grade as per IEC 60502/ BS: 7655

Product Feature:

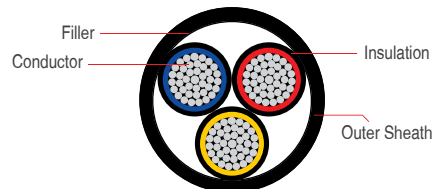
- Light Weight
- Very good Insulation Properties
- Long Life
- High Temperature Tolerance upto 105 Degree
- Low bend Radius
- Good Fire Properties
- High Physical Properties than Copper Variant
- Good Weathering Properties



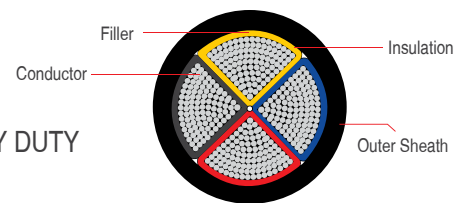
1 Core Unarmoured Power Cable



2 Core Unarmoured Power Cable



3 Core Unarmoured Power Cable



Triangular Shaped 4 Core Unarmoured Power Cable

Variant:

- FR • HEAVY DUTY
- 120 Degree

Technical Data:

Insulation Resistance: 3670 Mega - Ohm-Km

Conductor Class: Class- 2 to IEC 60228

Bending Radius: 08 X OD (OD= Overall Diameter of Cable)

Voltage Rated: 0.6 / 1.0 Kv

Test Voltage: 3500 Volts

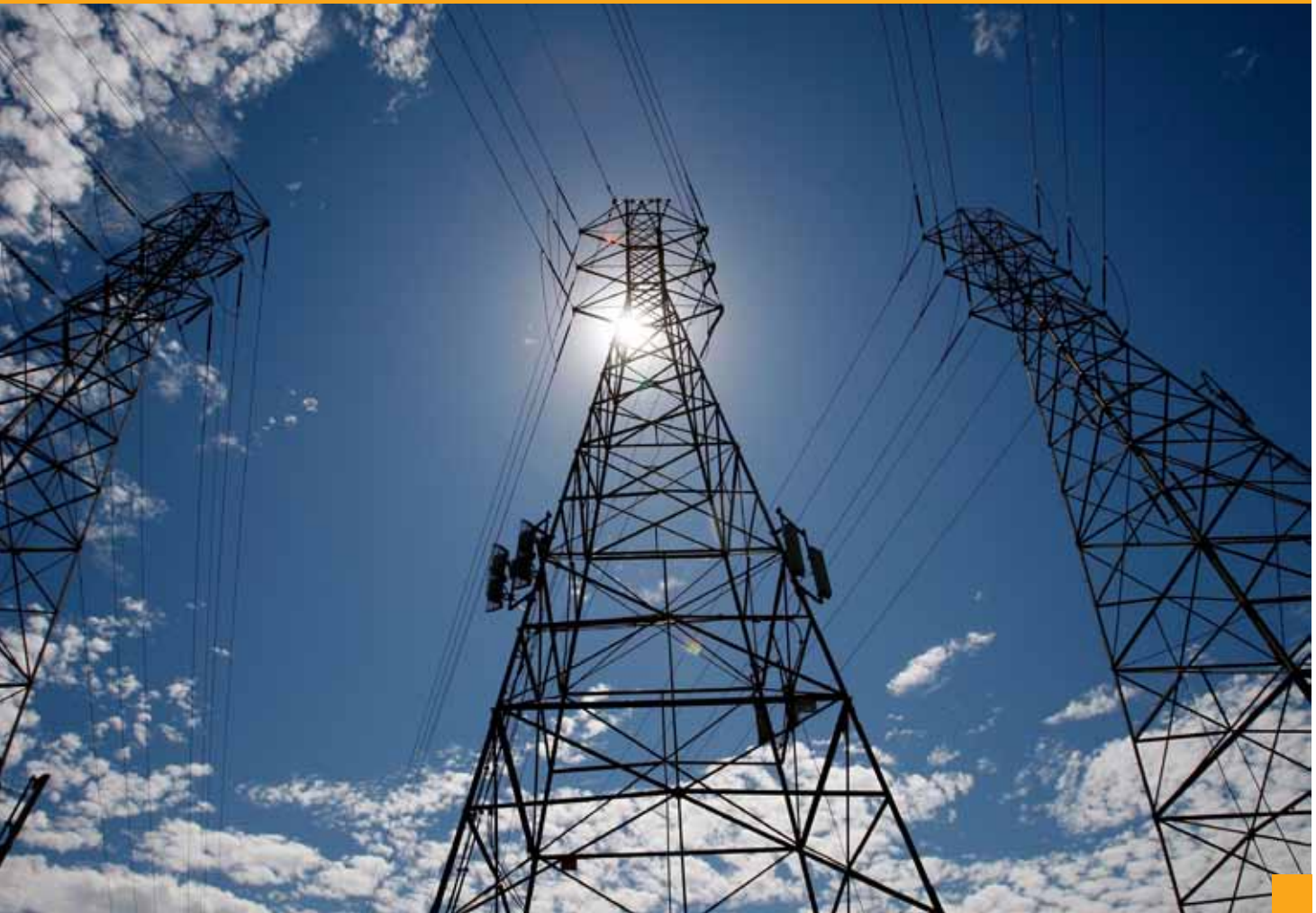
Temperature Range: -25°C to +120°C

Short Circuiting Temp: 250°C



Application:

- General & Industrial Application Plant Wiring
- Over Group Cables
- For Very High Life Expectancy
- Near Furnaces or any other High Temperature Area
- Where Low Bending is required





**DIMENSIONAL TABLES, POWER CABLES – ALUMINIUM / EPR / CR
SINGLE CORE AL. COND. EPR INSULATED & CHLORINATED RUBBER SHEATHED CABLES ACCORDING TO IEC 60502**

Core and Size	Stranding (Minimum No of strands)	Nominal Thickness of Insulation mm	Nominal Overall Diameter mm	Approx. Weight kg/km	Max DC Resistance at 20°C	Current rating Amp
SQ MM						
1 X 4.0	7	1	9.3	116.11	7.41	42
1 X 6.0	7	1	9.8	130.61	4.61	54
1 X 10.0	7	1	10.6	156.42	3.08	75
1 X 16.0	7	1	11.5	188.64	1.91	101
1 X 25.0	7	1.2	13.0	245.19	1.20	138
1 X 35.0	7	1.2	14.1	293.78	0.868	172
1 X 50.0	19	1.4	15.7	370.95	0.641	210
1 X 70.0	19	1.4	17.2	460.19	0.443	271
1 X 95.0	19	1.6	19.3	578.70	0.320	332
1 X 120.0	37	1.6	20.8	685.18	0.253	387
1 X 150.0	37	1.8	22.8	823.13	0.206	448
1 X 185.0	37	2	24.8	985.20	0.164	515
1 X 240.0	61	2.2	27.6	1229.16	0.125	611
1 X 300.0	61	2.4	30.1	1483.77	0.100	708
1 X 400.0	61	2.6	34.3	1925.00	0.0778	856
1 X 500.0	61	2.8	38.0	2358.46	0.0605	991
1 X 630.0	91	2.8	40.8	2840.42	0.0469	1154





TWO CORE AL. COND. EPR INSULATED & CHLORINATED RUBBER SHEATHED CABLES ACCORDING TO IEC 60502

Core and Size SQ MM	Stranding (Minimum No of strands)	Nominal Thickness of Insulation mm	Nominal Overall Diameter mm	Approx. Weight kg/km	Max DC Resistance at 20°C	Current rating Amp
2 X 4.0	7	1	13.6	200.33	7.41	38
2 X 6.0	7	1	14.6	229.33	4.61	49
2 X 10.0	7	1	16.2	280.96	3.08	67
2 X 16.0	7	1	18.1	347.59	1.91	91
2 X 25.0	7	1.2	21.3	471.87	1.20	108
2 x 35.0	7	1.2	23.6	579.27	0.868	135
2 x 50.0	19	1.4	27.3	760.71	0.641	164
2 x 70.0	19	1.4	30.2	950.54	0.443	211
2 x 95.0	19	1.6	34.5	1206.19	0.320	257
2 x 120.0	37	1.6	37.5	1433.86	0.253	300





THREE CORE AL. COND. EPR INSULATED & CHLORINATED RUBBER SHEATHED CABLES ACCORDING TO IEC 60502

Core and Size SQ MM	Stranding (Minimum No of strands)	Nominal Thickness of Insulation mm	Nominal Overall Diameter mm	Approx. Weight kg/km	Max DC Resistance at 20°C	Current rating Amp
3 X 4.0	7	1	14.3	235.33	7.41	32
3 X 6.0	7	1	15.4	273.11	4.61	42
3 X 10.0	7	1	17.1	341.40	3.08	58
3 X 16.0	7	1	19.2	433.45	1.91	77
3 X 25.0	7	1.2	22.6	599.34	1.20	97
3 X 35.0	7	1.2	25.2	744.70	0.868	120
3 X 50.0	19	1.4	29.1	991.43	0.641	146
3 X 70.0	19	1.4	32.3	1254.20	0.443	187
3 X 95.0	19	1.6	37.4	1653.01	0.320	227
3 X 120.0	37	1.6	40.6	1974.56	0.253	263
3 X 150.0	37	1.8	44.8	2392.81	0.206	304
3 X 185.0	37	2	49.6	2950.09	0.164	347
3 X 240.0	61	2.2	55.6	3702.51	0.125	409





FOUR CORE AL. COND. EPR INSULATED & CHLORINATED RUBBER SHEATHED CABLES ACCORDING TO IEC 60502

Core and Size	Stranding (Number of Strand/Strand Diameter)	Nominal Thickness of Insulation mm	Nominal Overall Diameter mm	Approx. Weight kg/km	Max DC Resistance at 20°C	Current rating Amp
SQ MM						
4 X 4.0	7	1	15.4	276.20	7.41	32
4 X 6.0	7	1	16.6	321.54	4.61	42
4 X 10.0	7	1	18.6	413.48	3.08	58
4 X 16.0	7	1	21.0	531.19	1.91	77
4 X 25.0	7	1.2	24.9	742.53	1.20	97
4 X 35.0	7	1.2	27.7	928.94	0.868	120
4 X 50.0	19	1.4	32.1	1246.16	0.641	146
4 X 70.0	19	1.4	36.2	1633.28	0.443	187
4 X 95.0	19	1.6	41.3	2092.76	0.320	227
4 X 120.0	37	1.6	45.4	2568.85	0.253	263
4 X 150.0	37	1.8	50.1	3117.54	0.206	304
4 X 185.0	37	2	55.0	3764.81	0.164	347



UNARMoured CABLES

Rigid UnArmoured - High Performance Aluminium /EPR /HOFR



RIGID CABLES

Rigid UnArmoured - High Performance Aluminium /EPR /HOFR

Category: Rigid Cables

Sub Category: UnArmoured Cables 1.1 KV

Main Characteristics: Economical & High Performance

Name: 1.1 KV Rigid Un Armoured Aluminium / EPR/ HOFR

Part No. H07RN-F-AL

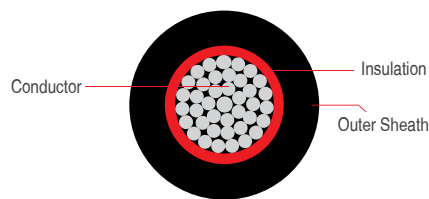
Approval: Generally Conforming IEC 60502, BS 6360

Construction:

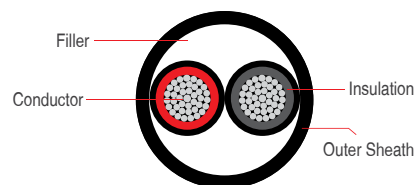
- **Class:** 2 Stranded Aluminium Wire as per BS 6360 / IEC 60228
- **Insulation:** EPR as per IS:6380/1984 / BS: 7655
- **Core Identification:**
 - 1 Core: **Red / Black / Natural**
 - 2 Core: **Red, Black**
 - 3 Core: **Red, Yellow, Blue**
 - 4 Core: **Red, Yellow , Blue & Green**
- **Inner Sheath:** HOFR Grade as per IEC 60502/ BS: 7655
- **Outer Sheath:** HOFR Grade as per BS: 7655 / IEC 60502

Product Feature:

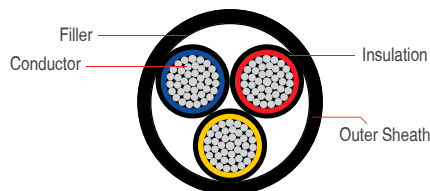
- Light Weight
- Very good Insulation Properties
- Long Life
- High Temperature Tolerance upto 90 Degree
- Low bend Radius
- Good Fire Properties
- Oil Resistance
- High Physical Properties than Copper Variant



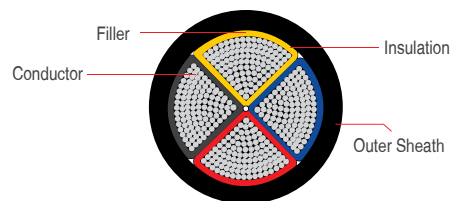
1 Core Unarmoured Power Cable



2 Core Unarmoured Power Cable



3 Core Unarmoured Power Cable



Triangular Shaped 4 Core Unarmoured Power Cable

Variant:

- FR

Technical Data:

Insulation Resistance: 3670 Mega - Ohm-Km

Conductor Class: Class- 2 to IEC 60228

Bending Radius: 08 X OD (OD= Overall Diameter of Cable)

Voltage Rated: 0.6 / 1.0 Kv

Test Voltage: 3500 Volts

Temperature Range: -25°C to +120°C

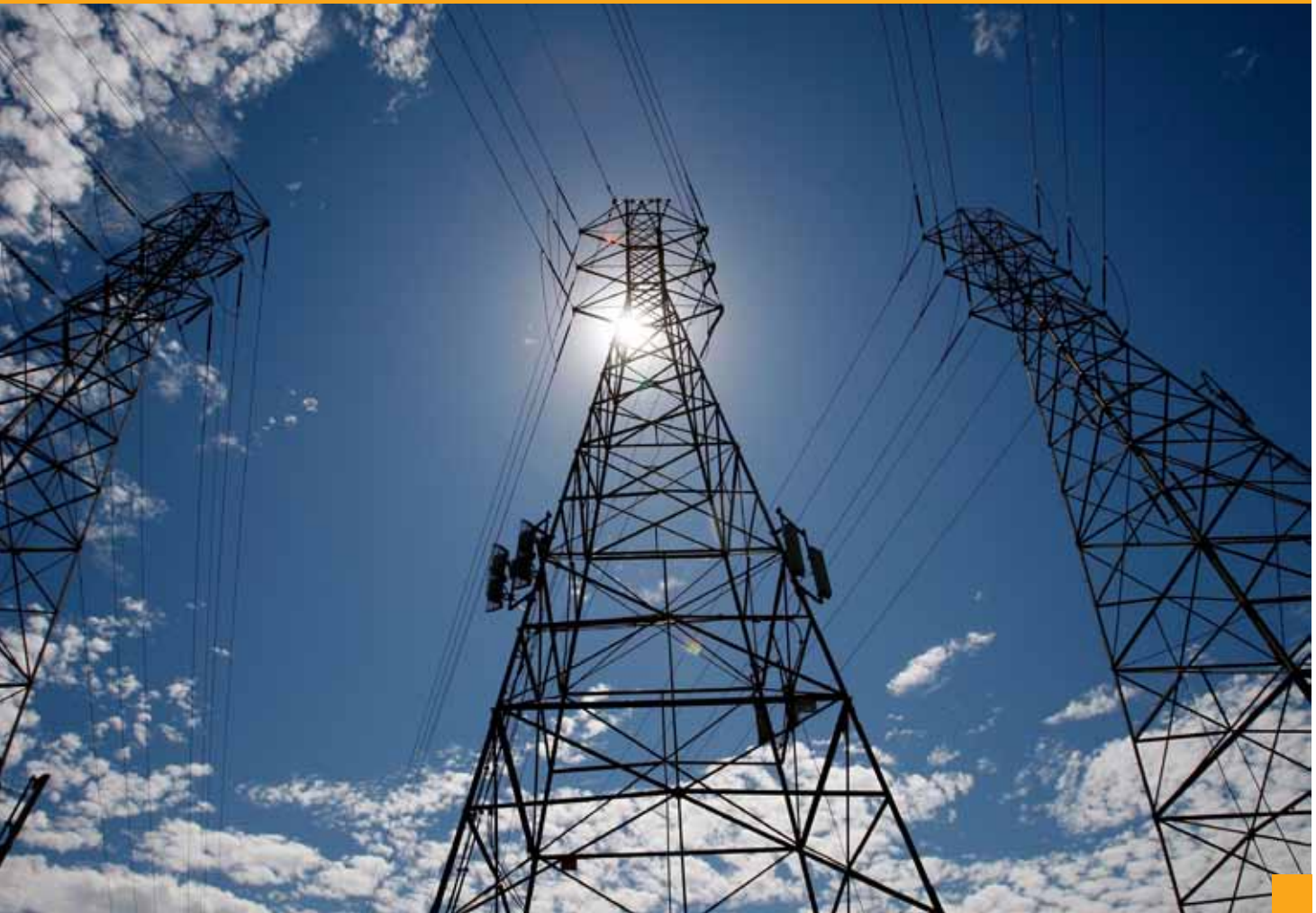
Short Circuiting Temp: 250°C



www.suncables.com

Application:

- General & Industrial Application Plant Wiring
- Over Group Cables
- For Very High Life Expectancy
- Near Furnaces or any other High Temperature Area
- Where Low Bending is required
- Area with good Oil and Chemical Resistance
- Good Weathering Properties





**DIMENSIONAL TABLES, POWER CABLES – ALUMINIUM / EPR / CR
SINGLE CORE AL. COND. EPR INSULATED & CHLORINATED RUBBER SHEATHED CABLES ACCORDING TO IEC 60502**

Core and Size	Stranding (Minimum No of strands)	Nominal Thickness of Insulation mm	Nominal Overall Diameter mm	Approx. Weight kg/km	Max DC Resistance at 20°C	Current rating Amp
SQ MM						
1 X 4.0	7	1	9.3	116.11	7.41	42
1 X 6.0	7	1	9.8	130.61	4.61	54
1 X 10.0	7	1	10.6	156.42	3.08	75
1 X 16.0	7	1	11.5	188.64	1.91	101
1 X 25.0	7	1.2	13.0	245.19	1.20	138
1 X 35.0	7	1.2	14.1	293.78	0.868	172
1 X 50.0	19	1.4	15.7	370.95	0.641	210
1 X 70.0	19	1.4	17.2	460.19	0.443	271
1 X 95.0	19	1.6	19.3	578.70	0.320	332
1 X 120.0	37	1.6	20.8	685.18	0.253	387
1 X 150.0	37	1.8	22.8	823.13	0.206	448
1 X 185.0	37	2	24.8	985.20	0.164	515
1 X 240.0	61	2.2	27.6	1229.16	0.125	611
1 X 300.0	61	2.4	30.1	1483.77	0.100	708
1 X 400.0	61	2.6	34.3	1925.00	0.0778	856
1 X 500.0	61	2.8	38.0	2358.46	0.0605	991
1 X 630.0	91	2.8	40.8	2840.42	0.0469	1154





TWO CORE AL. COND. EPR INSULATED & CHLORINATED RUBBER SHEATHED CABLES ACCORDING TO IEC 60502

Core and Size SQ MM	Stranding (Minimum No of strands)	Nominal Thickness of Insulation mm	Nominal Overall Diameter mm	Approx. Weight kg/km	Max DC Resistance at 20°C	Current rating Amp
2 X 4.0	7	1	13.6	200.33	7.41	38
2 X 6.0	7	1	14.6	229.33	4.61	49
2 X 10.0	7	1	16.2	280.96	3.08	67
2 X 16.0	7	1	18.1	347.59	1.91	91
2 X 25.0	7	1.2	21.3	471.87	1.20	108
2 x 35.0	7	1.2	23.6	579.27	0.868	135
2 x 50.0	19	1.4	27.3	760.71	0.641	164
2 x 70.0	19	1.4	30.2	950.54	0.443	211
2 x 95.0	19	1.6	34.5	1206.19	0.320	257
2 x 120.0	37	1.6	37.5	1433.86	0.253	300





THREE CORE AL. COND. EPR INSULATED & CHLORINATED RUBBER SHEATHED CABLES ACCORDING TO IEC 60502

Core and Size SQ MM	Stranding (Minimum No of strands)	Nominal Thickness of Insulation mm	Nominal Overall Diameter mm	Approx. Weight kg/km	Max DC Resistance at 20°C	Current rating Amp
3 X 4.0	7	1	14.3	235.33	7.41	32
3 X 6.0	7	1	15.4	273.11	4.61	42
3 X 10.0	7	1	17.1	341.40	3.08	58
3 X 16.0	7	1	19.2	433.45	1.91	77
3 X 25.0	7	1.2	22.6	599.34	1.20	97
3 X 35.0	7	1.2	25.2	744.70	0.868	120
3 X 50.0	19	1.4	29.1	991.43	0.641	146
3 X 70.0	19	1.4	32.3	1254.20	0.443	187
3 X 95.0	19	1.6	37.4	1653.01	0.320	227
3 X 120.0	37	1.6	40.6	1974.56	0.253	263
3 X 150.0	37	1.8	44.8	2392.81	0.206	304
3 X 185.0	37	2	49.6	2950.09	0.164	347
3 X 240.0	61	2.2	55.6	3702.51	0.125	409





FOUR CORE AL. COND. EPR INSULATED & CHLORINATED RUBBER SHEATHED CABLES ACCORDING TO IEC 60502

Core and Size SQ MM	Stranding (Number of Strand/Strand Diameter)	Nominal Thickness of Insulation mm	Nominal Overall Diameter mm	Approx. Weight kg/km	Max DC Resistance at 20°C	Current rating Amp
4 X 4.0	7	1	15.4	276.20	7.41	32
4 X 6.0	7	1	16.6	321.54	4.61	42
4 X 10.0	7	1	18.6	413.48	3.08	58
4 X 16.0	7	1	21.0	531.19	1.91	77
4 X 25.0	7	1.2	24.9	742.53	1.20	97
4 X 35.0	7	1.2	27.7	928.94	0.868	120
4 X 50.0	19	1.4	32.1	1246.16	0.641	146
4 X 70.0	19	1.4	36.2	1633.28	0.443	187
4 X 95.0	19	1.6	41.3	2092.76	0.320	227
4 X 120.0	37	1.6	45.4	2568.85	0.253	263
4 X 150.0	37	1.8	50.1	3117.54	0.206	304
4 X 185.0	37	2	55.0	3764.81	0.164	347



UNARMoured CABLES

Rigid UnArmoured - High Performance Cu /Silicon / Braid



RIGID CABLES

Rigid UnArmoured - High Performance Cu /Silicon / Braid

Category: Rigid Cables

Sub Category: UnArmoured Cables 1.1 KV

Main Characteristics: Space Saving & High Temperature

Name: 1.1 KV Rigid Un Armoured Copper / Silicon/ Silicon / Fiber

Part No. SILICON - 200

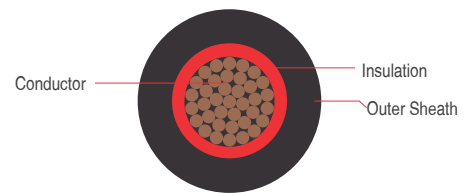
Approval: BS 6195

Construction:

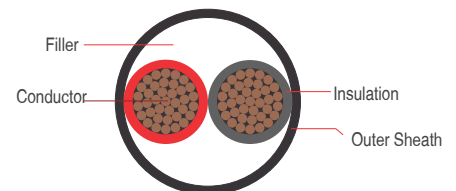
- **Class:** 2 Stranded Tinned Copper Wire as per IEC 60228
- **Separator Tape :** Plastic Tape
- **Insulation:** Silicon Rubber as per VDE 0207
- **Core Identification:**
 - 1 Core: **Black / Red / Natural**
 - 2 Core: **Red, Black**
 - 3 Core: **Red, Yellow, Blue**
 - 4 Core: **Red, Yellow, Blue & Black**
- **Outer Sheath:** Silicon Rubber Grade as per VDE 0207
- **Braid:** Fiber Glass Braid
- **Varnish:** High Temperature varnish

Product Feature:

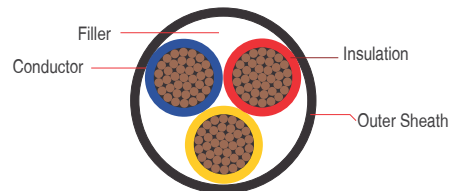
- Space Saving
- Very good Insulation Properties
- Long Life
- High Temperature Tolerance upto 200 Degree
- Low bend Radius
- Good Fire Properties
- Good Chemical & Oil Resistance
- Good Weathering Properties



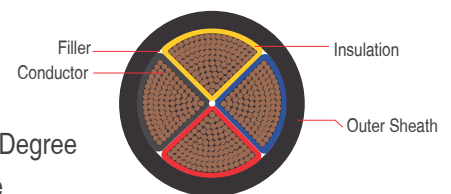
1 Core Unarmoured Power Cable



2 Core Unarmoured Power Cable



3 Core Unarmoured Power Cable



Sector shaped 4 Unarmoured Power Cable

Variant:

- FR • 150 Degree
- 200 Degree

Technical Data:

Insulation Resistance: 870 Mega – Ohm-Km

Conductor Class: Class- 2 to IEC 60228

Bending Radius: 08 X OD (OD= Overall Diameter of Cable)

Voltage Rated: 0.6 / 1.0 Kv

Test Voltage: 3500 Volts

Temperature Range: -25°C to +200°C

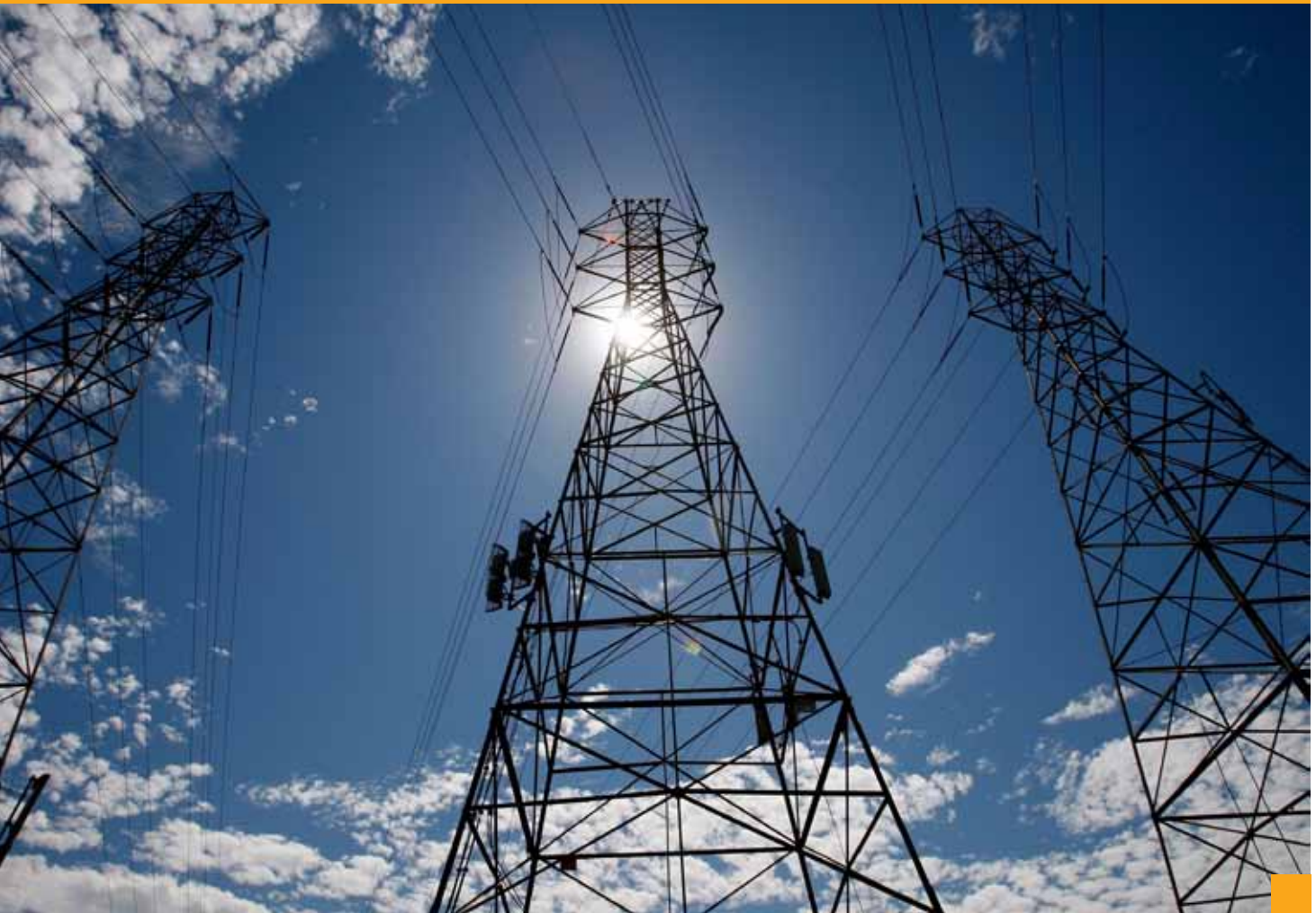
Short Circuiting Temp: 350°C



www.suncables.com

Application:

- For Very High Life Expectancy
- With Furnaces or any other High Temperature Area





DIMENSIONAL TABLES, POWER FLEXIBLE CABLES – COPPER / SILICON / BRAID SINGLE CORE CU COND. SILICON INSULATED & SILICON SHEATHED GLASS FIBRE BRAIDED & VARNISHED CABLES ACCORDING TO BS 6195

Core and Size	Stranding (Minimum No of strands)	Nominal Thickness of Insulation mm	Nominal Overall Diameter mm	Approx. Weight kg/km	Max DC Resistance at 20°C	Current rating Amp
SQ MM						
1 X 4.0	7	1	7.6	104.62	4.70	42
1 X 6.0	7	1	8.1	129.26	3.11	54
1 X 10.0	7	1	8.9	177.28	1.84	73
1 X 16.0	7	1	9.8	241.73	1.16	98
1 X 25.0	7	1.2	11.3	346.66	0.734	129
1 X 35.0	7	1.2	12.4	453.50	0.529	158
1 X 50.0	19	1.4	14.1	621.69	0.391	198
1 X 70.0	19	1.4	15.6	834.69	0.270	245
1 X 95.0	19	1.6	17.7	1085.96	0.195	292
1 X 120.0	37	1.6	19.2	1350.50	0.154	344
1 X 150.0	37	1.8	21.1	1663.00	0.126	391
1 X 185.0	37	2	23.2	2038.74	0.100	448
1 X 240.0	61	2.2	25.9	2623.04	0.0762	528
1 X 300.0	61	2.4	28.5	3242.45	0.0607	608





TWO CORE CU COND. SILICON INSULATED & SILICON SHEATHED GLASS FIBRE BRAIDED & VARNISHED CABLES ACCORDING TO BS 6195

Core and Size	Stranding (Minimum No of strands)	Nominal Thickness of Insulation mm	Nominal Overall Diameter mm	Approx. Weight kg/km	Max DC Resistance at 20°C	Current rating Amp
SQ MM						
2 X 4.0	7	1	11.90	193.6	4.70	34
2 X 6.0	7	1	12.9	242.9	3.11	44
2 X 10.0	7	1	14.5	338.9	1.84	91
2 X 16.0	7	1	16.41	472.3	1.16	82
2 X 25.0	7	1.2	19.62	693.2	0.734	108
2 x 35.0	7	1.2	21.97	916.9	0.529	135
2 x 50.0	19	1.4	25.61	1272.2	0.391	168
2 x 70.0	19	1.4	28.61	1712.7	0.270	207
2 x 95.0	19	1.6	32.89	2233.8	0.195	250
2 x 120.0	37	1.6	35.88	2777.6	0.154	292





THREE CORE CU COND. SILICON INSULATED & SILICON SHEATHED GLASS FIBRE BRAIDED & VARNISHED CABLES ACCORDING TO BS 6195

Core and Size	Stranding (Minimum No of strands)	Nominal Thickness of Insulation mm	Nominal Overall Diameter mm	Approx. Weight kg/km	Max DC Resistance at 20°C	Current rating Amp
SQ MM						
3 X 4.0	7	1	12.59	250.2	4.70	28
3 X 6.0	7	1	13.67	320.4	3.11	36
3 X 10.0	7	1	15.4	458.4	1.84	49
3 X 16.0	7	1	17.52	652.9	1.16	65
3 X 25.0	7	1.2	20.99	969.5	0.734	85
3 X 35.0	7	1.2	23.53	1293.8	0.529	105
3 X 50.0	19	1.4	27.46	1808.0	0.391	140
3 X 70.0	19	1.4	30.7	2452.3	0.270	175
3 X 95.0	19	1.6	35.32	3208.9	0.195	210
3 X 120.0	37	1.6	38.55	4006.0	0.154	250

SUN 1.1 KV Rigid Un Armoured Copper / Silicon/ Silicon / Fiber

SUN 1.1 KV Rigid Un Armoured Copper / Silicon/ Silicon / Fiber





FOUR CORE CU COND. SILICON INSULATED & SILICON SHEATHED GLASS FIBRE BRAIDED & VARNISHED CABLES ACCORDING TO BS 6195

Core and Size SQ MM	Stranding (Number of Strand/Strand Diameter)	Nominal Thickness of Insulation mm	Nominal Overall Diameter mm	Approx. Weight kg/km	Max DC Resistance at 20°C	Current rating Amp
4 X 4.0	7	1	13.63	308.2	4.70	28
4 X 6.0	7	1	14.93	402.6	3.11	36
4 X 10.0	7	1	17	589.1	1.84	49
4 X 16.0	7	1	19.33	842.2	1.16	65
4 X 25.0	7	1.2	23.22	1257.8	0.734	85
4 X 35.0	7	1.2	26.06	1685.1	0.529	105
4 X 50.0	19	1.4	30.47	2362.7	0.391	140
4 X 70.0	19	1.4	34.09	3214.8	0.270	175
4 X 95.0	19	1.6	39.27	4213.4	0.195	210
4 X 120.0	37	1.6	42.89	5268.6	0.154	250

